

EZ-Fit Greenhouse Instruction Manual

Congratulations on your purchase of an EZ-Fit Greenhouse! Our goal is to provide you with everything you need to make the assembly of your greenhouse kit go smoothly. The first portion of this instruction manual is based on a 10x12' Greenhouse. Your greenhouse kit may be a different size - if this is the case you may have a different amount of wall panels, however the same assembly principals apply. There is paperwork included with your packing slip that shows the details on the wall panels and all materials included for your particular shed kit.

Also, this manual includes assembly instructions for the optional floor kit. If you purchased your own flooring materials elsewhere, you may refer to this section for tips on assembly. If you are using concrete for your floor, simply disregard this part of the instructions.

Following is a list of which fasteners get used where. Again, refer to the packing slip for a list of fasteners that were sent with your shed kit.

2" Nails:

Fastening 3/4" LP ProStruct flooring to floor joists (optional floor kit.)

Corner trim

Roof gussets

Fastening Smartside Soffit to sidewalls

Fastening rafters to soffit

Facia trim

Windows and window trim.

2.5" Square-Drive Screws:

Fastening wall panels together

Double 2x4" top/plates

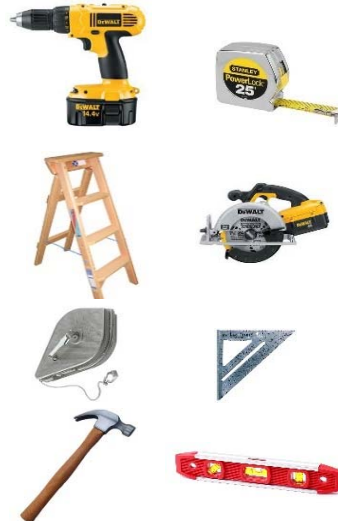
Fastening bottom/plate of walls down into floor. (once building is assembled)

1.5" Screws: for door hardware

3" Nails: for fastening 2x4" roof purlins to rafters.

Tools Needed:

- Cordless Drill
- Tape Measure
- Step-ladder
- Skilsaw
- Chalkline
- Speed Square
- Level
- Hammer



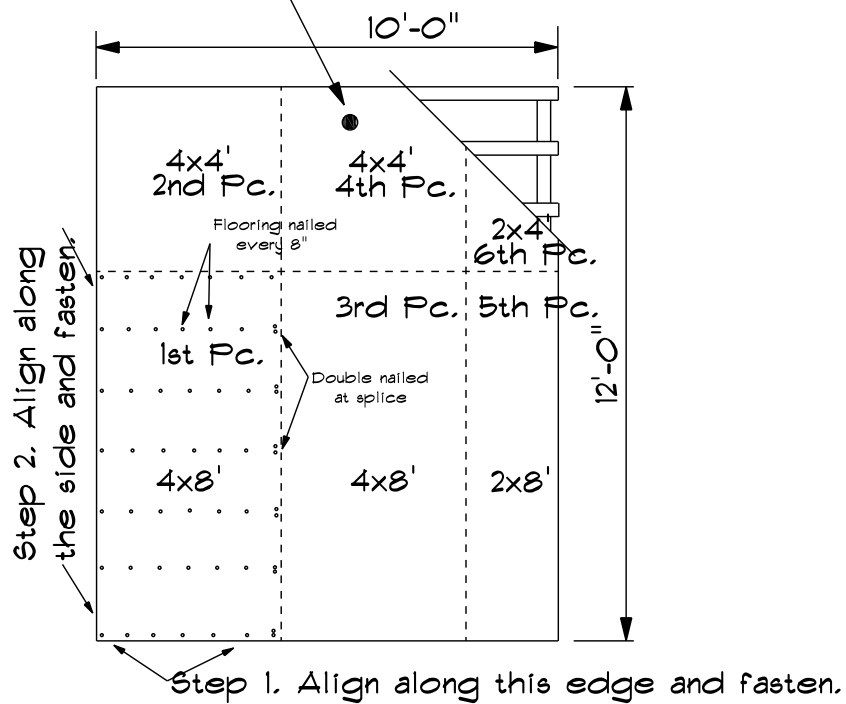
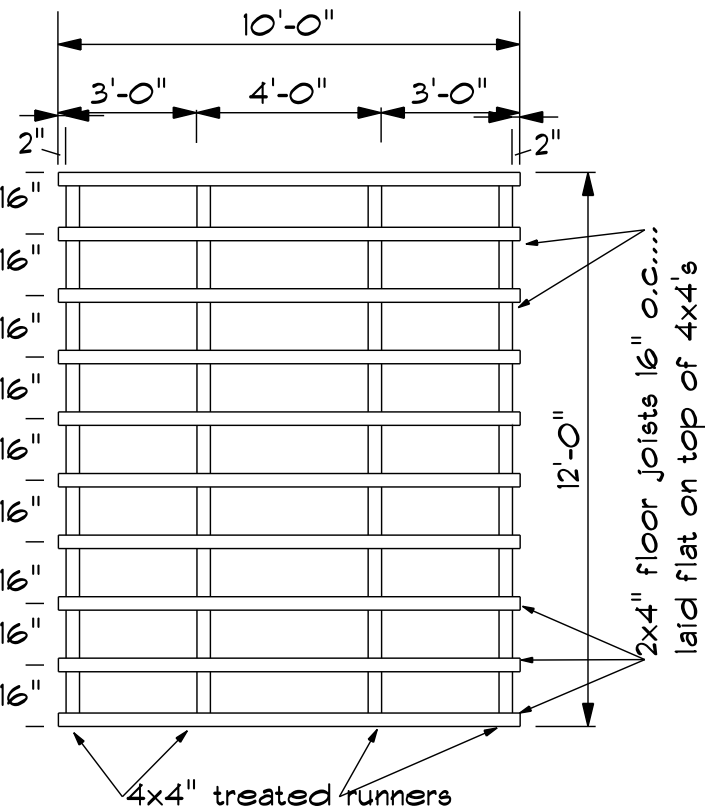
Floor Construction

Top View of floor framing

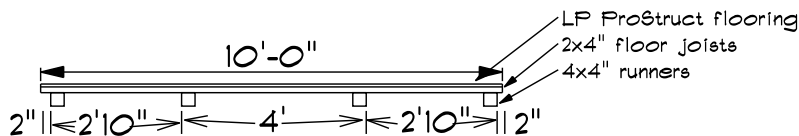
To make that floor is square:
Measure diagonally across corners and make that both measurements are same.

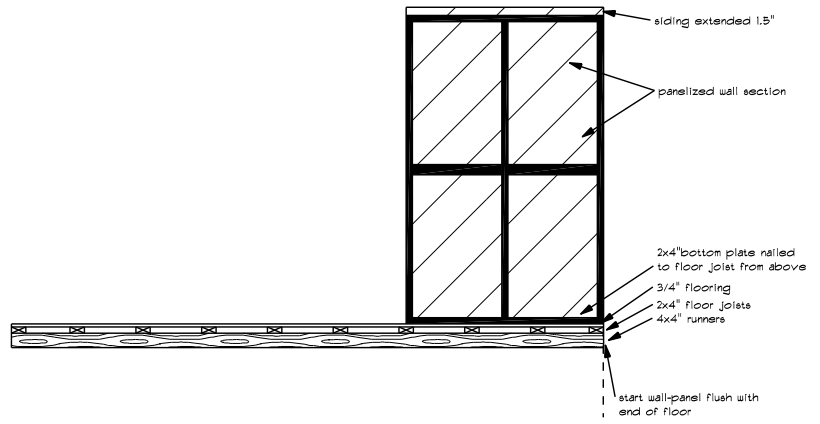
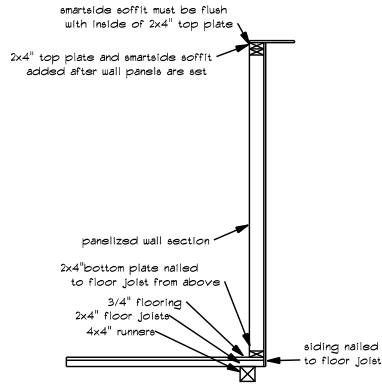
Top View of LP ProStruct Flooring

DRAIN NOTE: A 4" floor drain is included with the floor kit. One piece of flooring will be pre-drilled for the drain. Typically the drain will be towards the back end of the greenhouse.

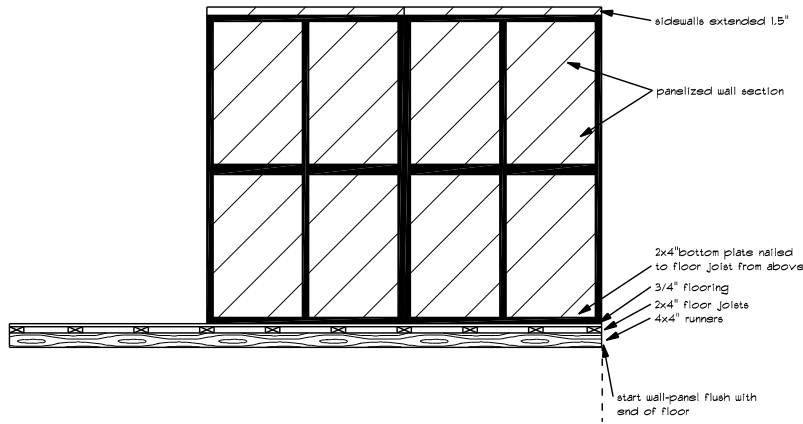


Front View

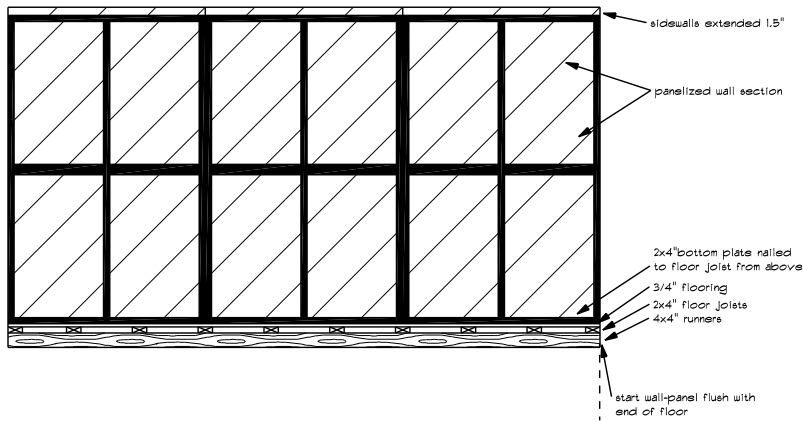




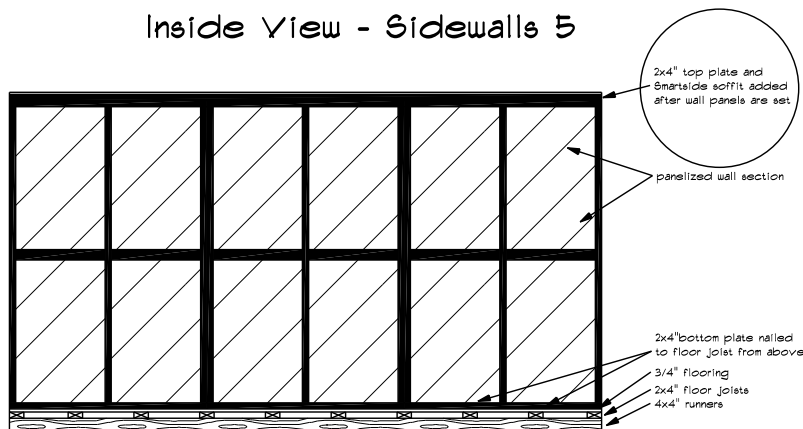
Inside View - Sidewalls 3



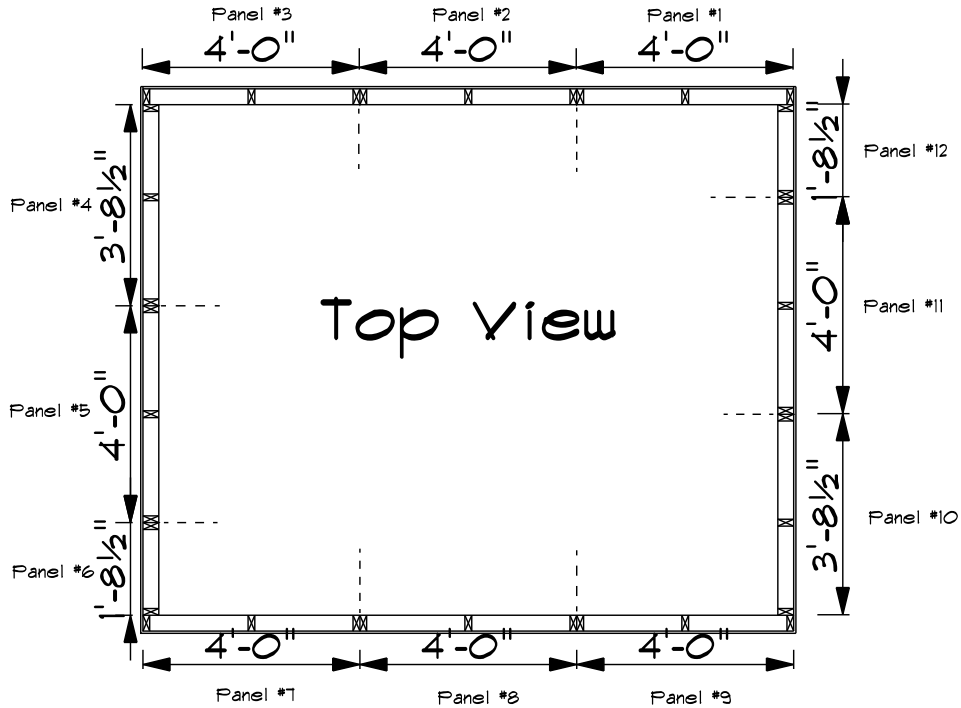
Inside View - Sidewalls 4



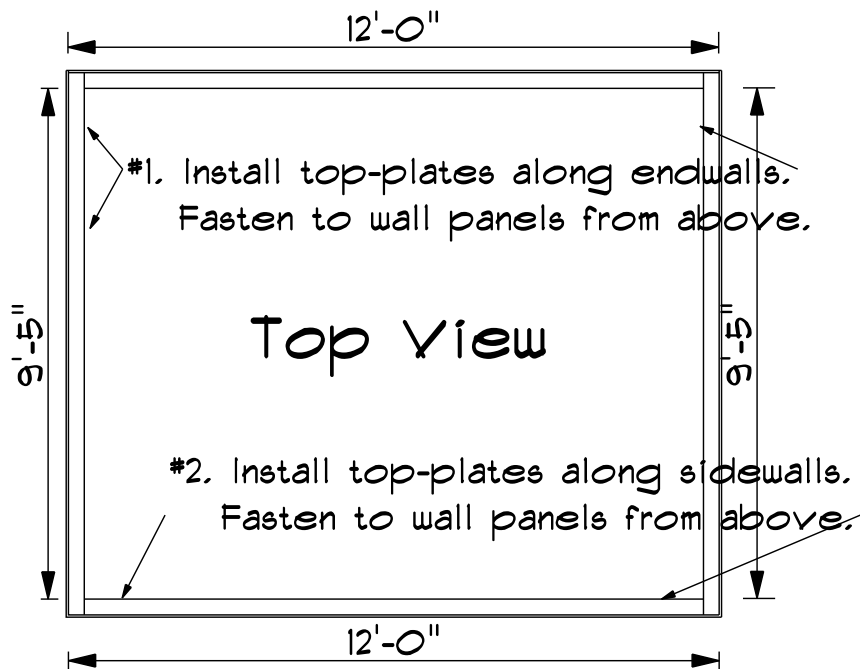
Inside View - Sidewalls 5

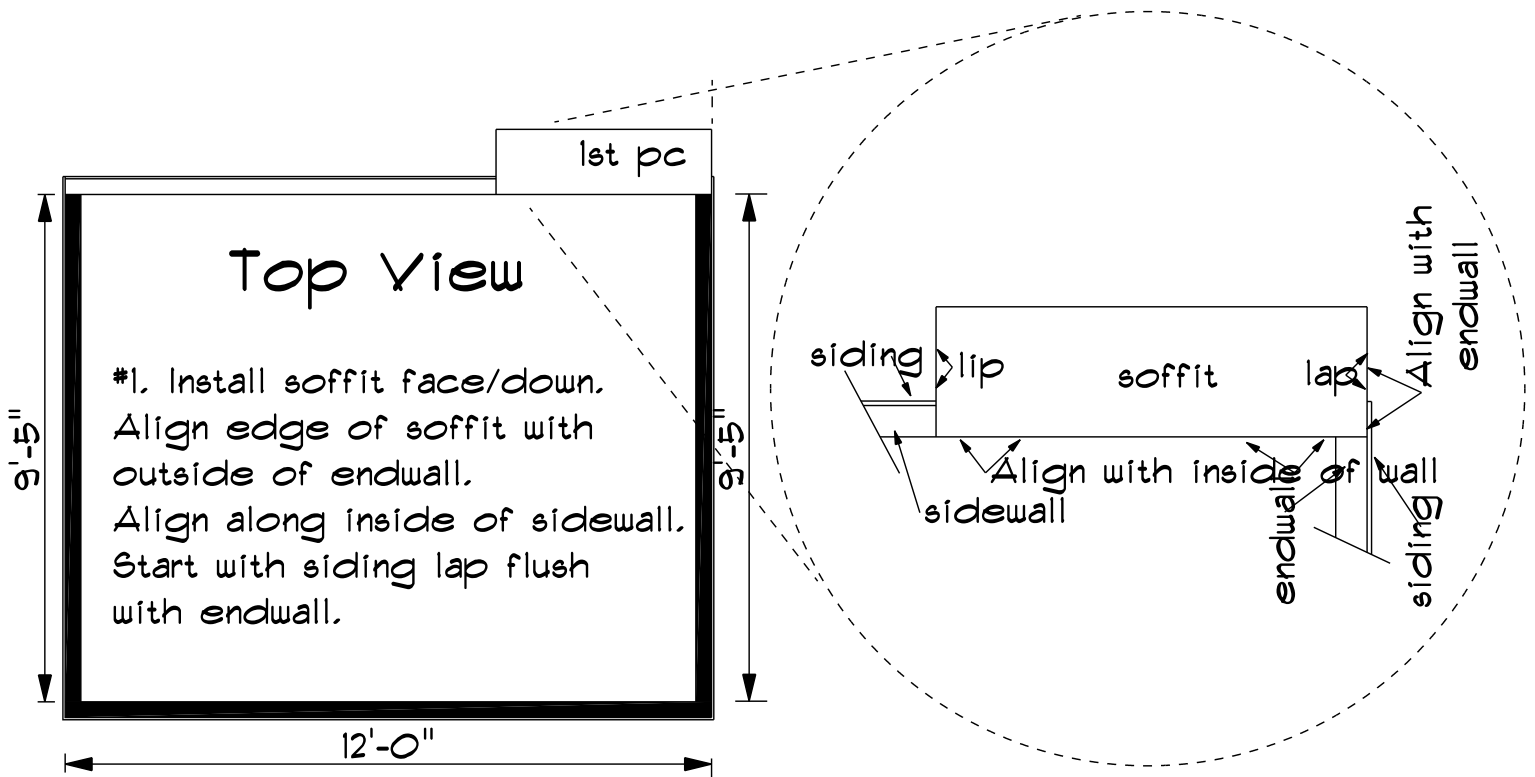


Note: This is only an example of a 10x12' building.
 Your particular building size may have different sized wall panels.
 Refer to the paperwork included with your packing list for more details.

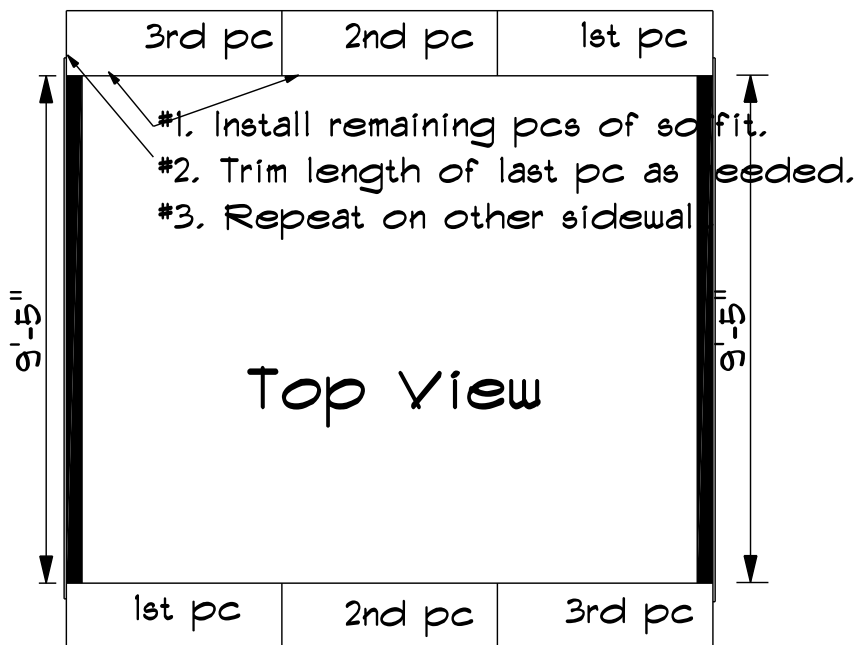


Top View - 2x4" Top/Plates

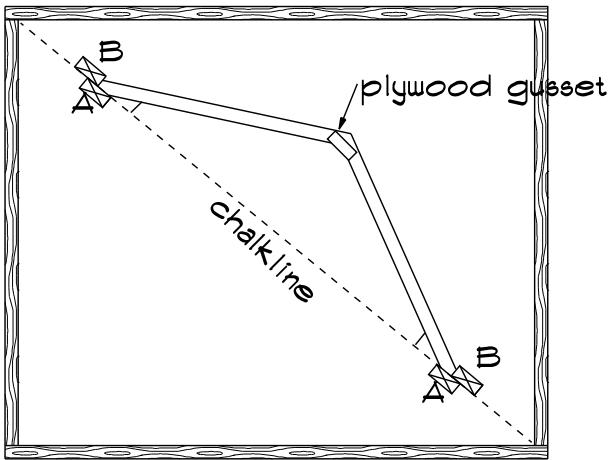




Top View - Smartside Soffit 2



Top view of floor



#1... snap a chalk-line across the corners of floor.

#2...put 2 stops along bottom of chalk-line (stop "A")

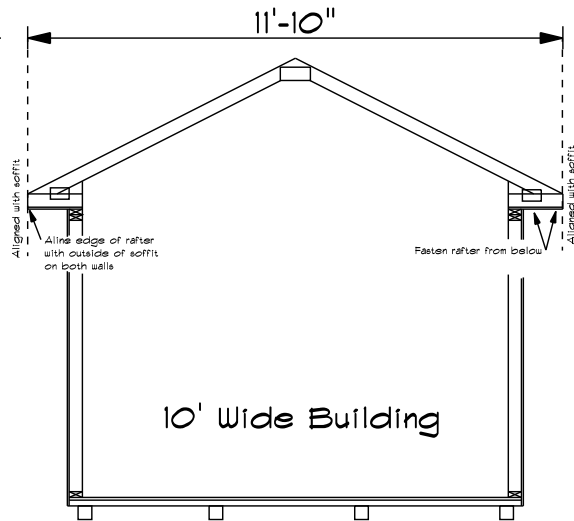
#3...measure correct distance for overall width of rafter and put down stops "B".

#4... match up peak of rafters and fasten gussets.

Overall width of rafter for EZ-Fit Greenhouse:

8' wide building: 9'10"

10' wide building: 11'10"



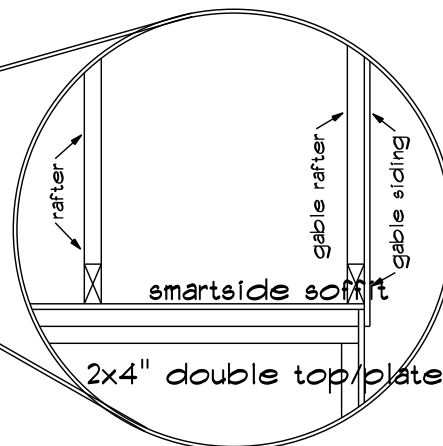
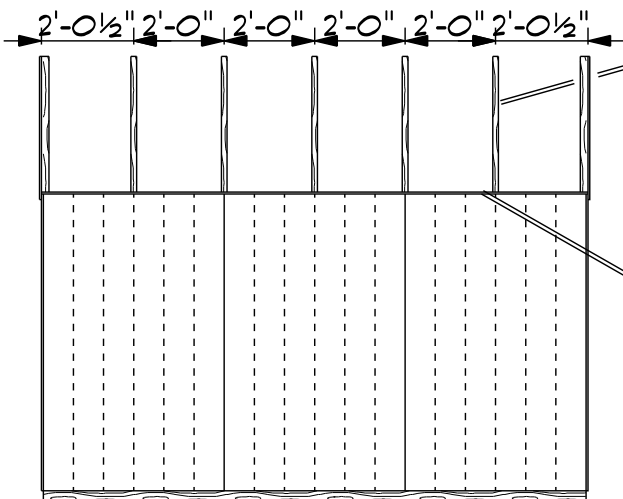
#1... fasten both gable end rafters first.
NOTE: both gable rafters are already coated with siding.

#2...make sure both sidewalls are straight and brace walls from inside as needed.

#3... fasten remainder of rafters as shown

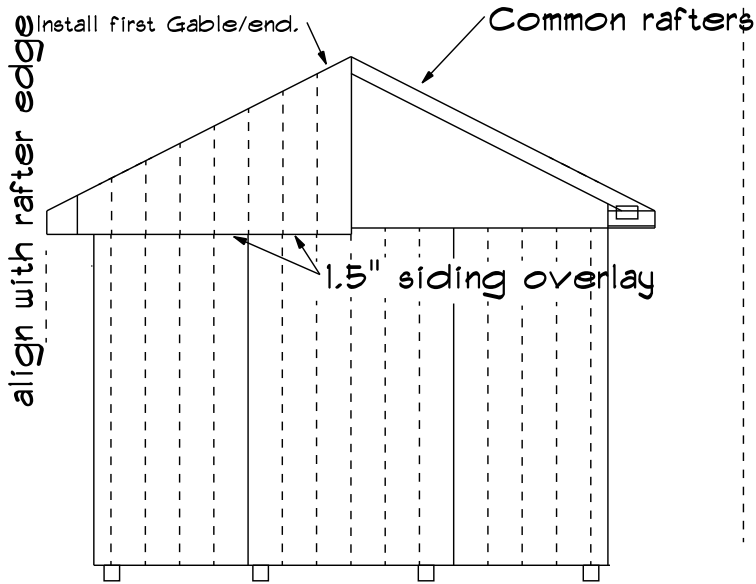
Rafters - Side View

Close-up View

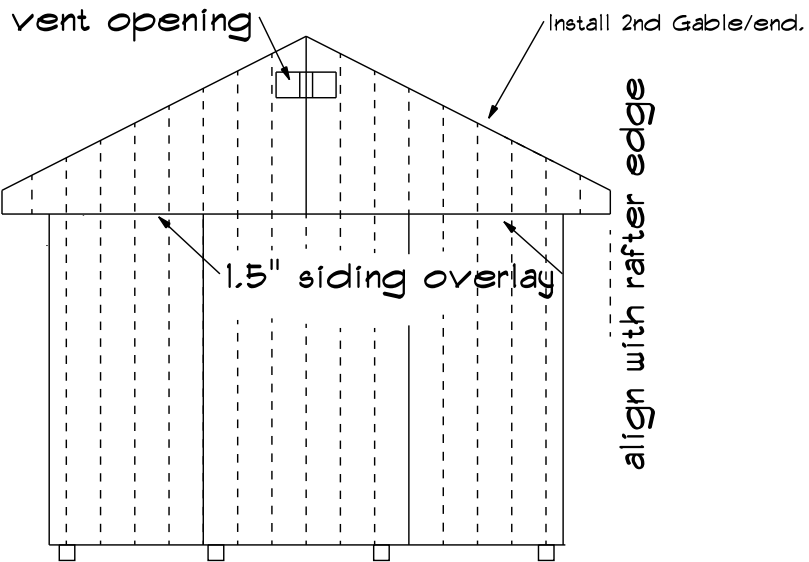
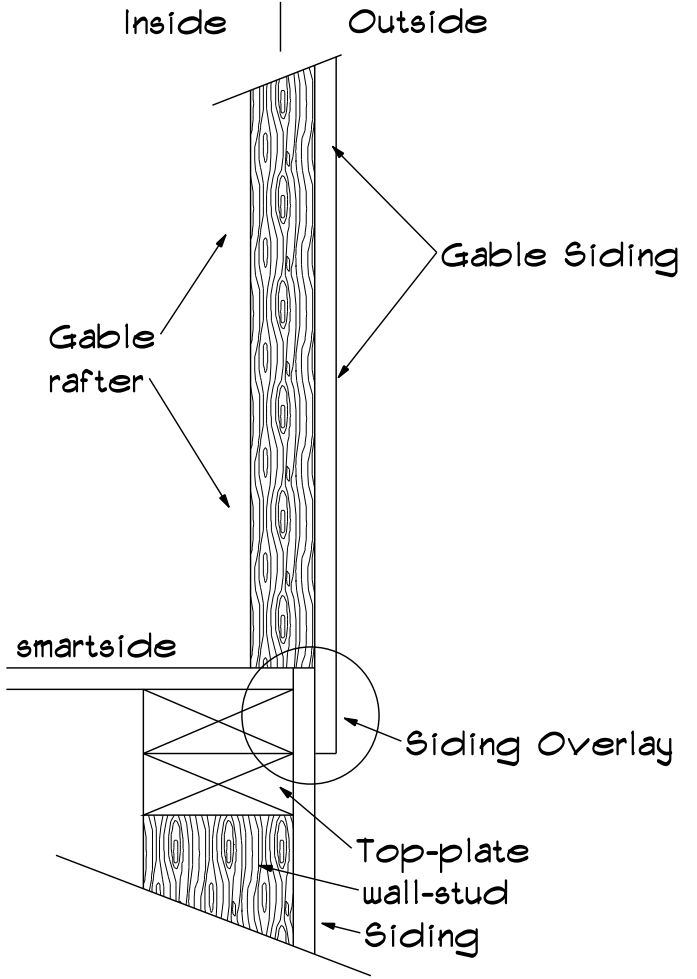


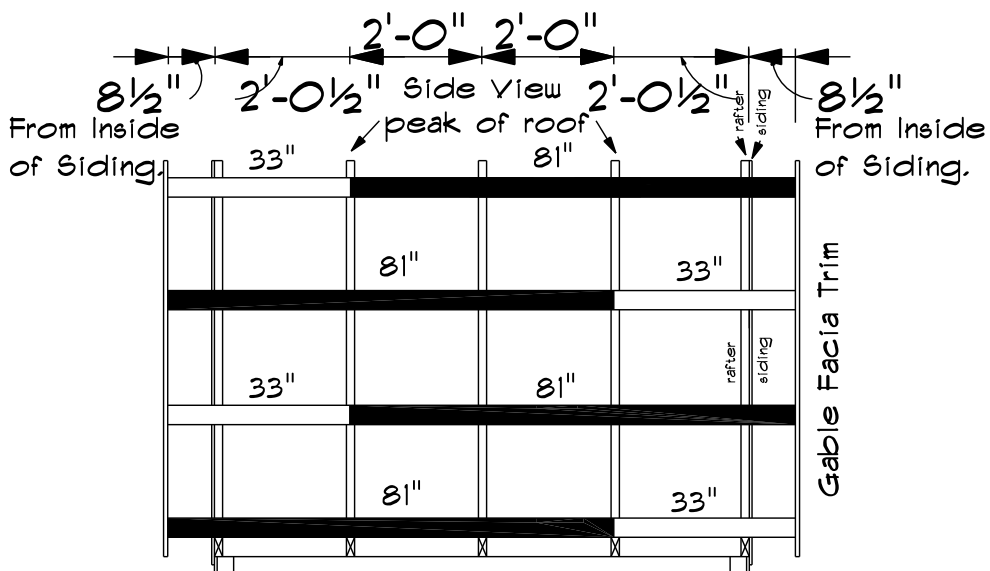
Gable/end Siding Overlay

End View



Side view



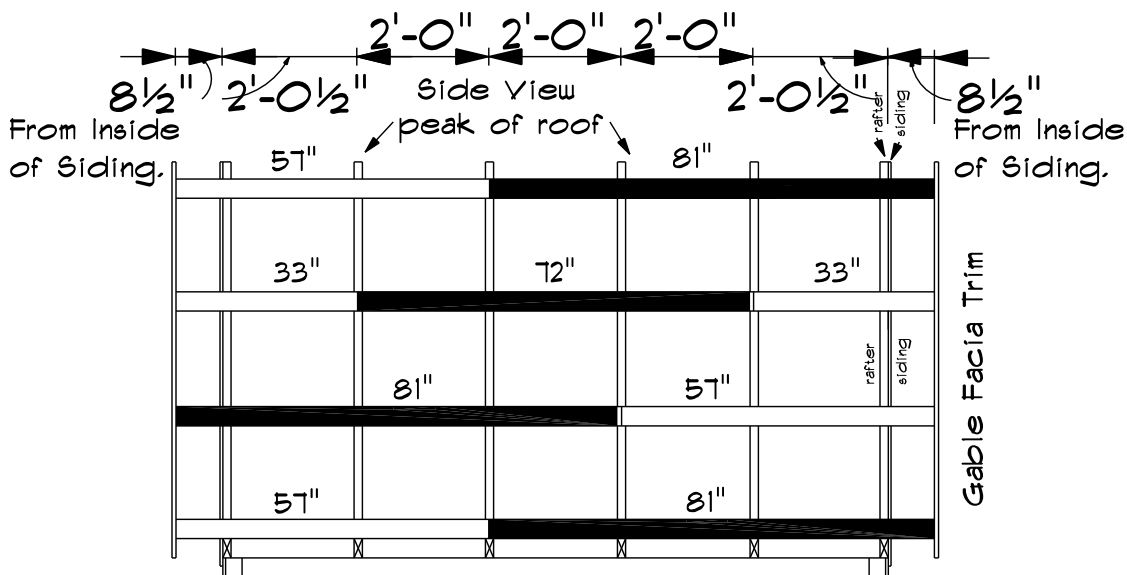


ROOF FRAMING FOR 8X8'.

Extend 2x4" Purlins 8.5" from inside of Gable/End siding for roof overhang.

(8" from outside of Gable/End siding.)

Fasten Gable Facia Trim to outside ends of Purlins.

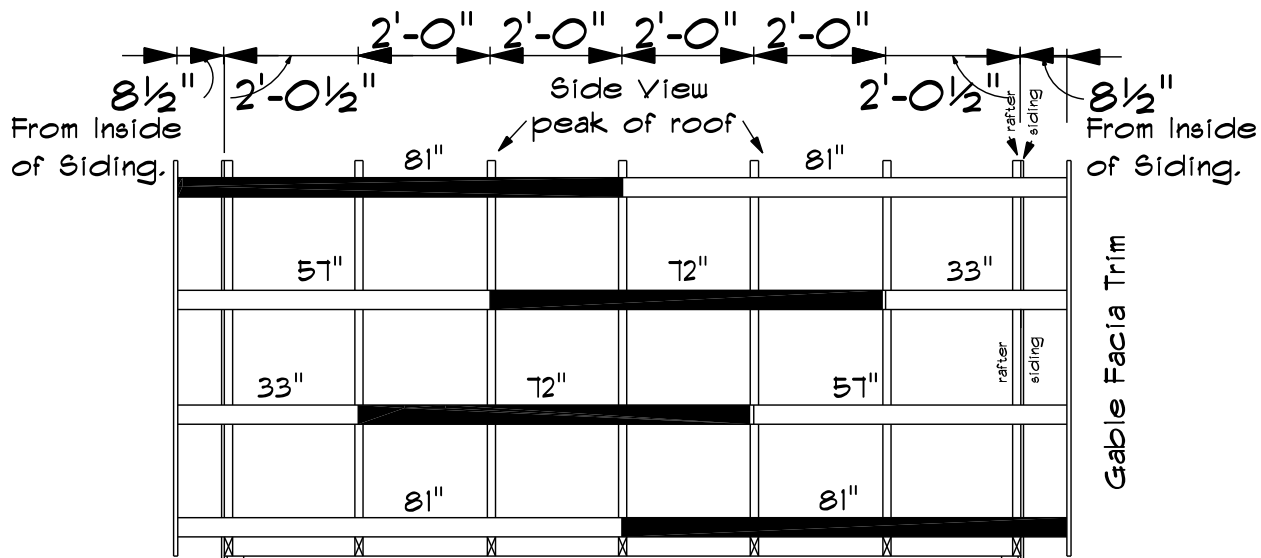


ROOF FRAMING 8X10'.

Extend 2x4" Purlins 8.5" from inside of Gable/End siding for roof overhang.

(8" from outside of Gable/End siding.)

Fasten Gable Facia Trim to outside ends of Purlins.

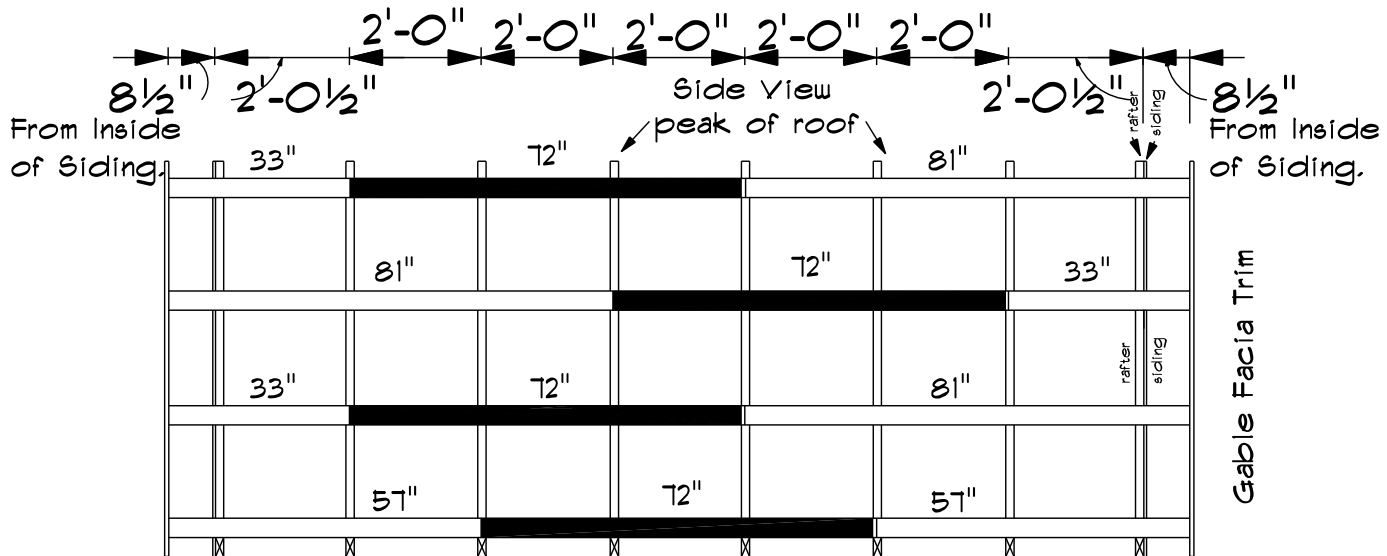


ROOF FRAMING 8X12' & 10X12'.

Extend 2x4" Purlins 8.5" from inside of Gable/End siding for roof overhang.

(8" from outside of Gable/End siding.)

Fasten Gable Facia Trim to outside ends of Purlins.

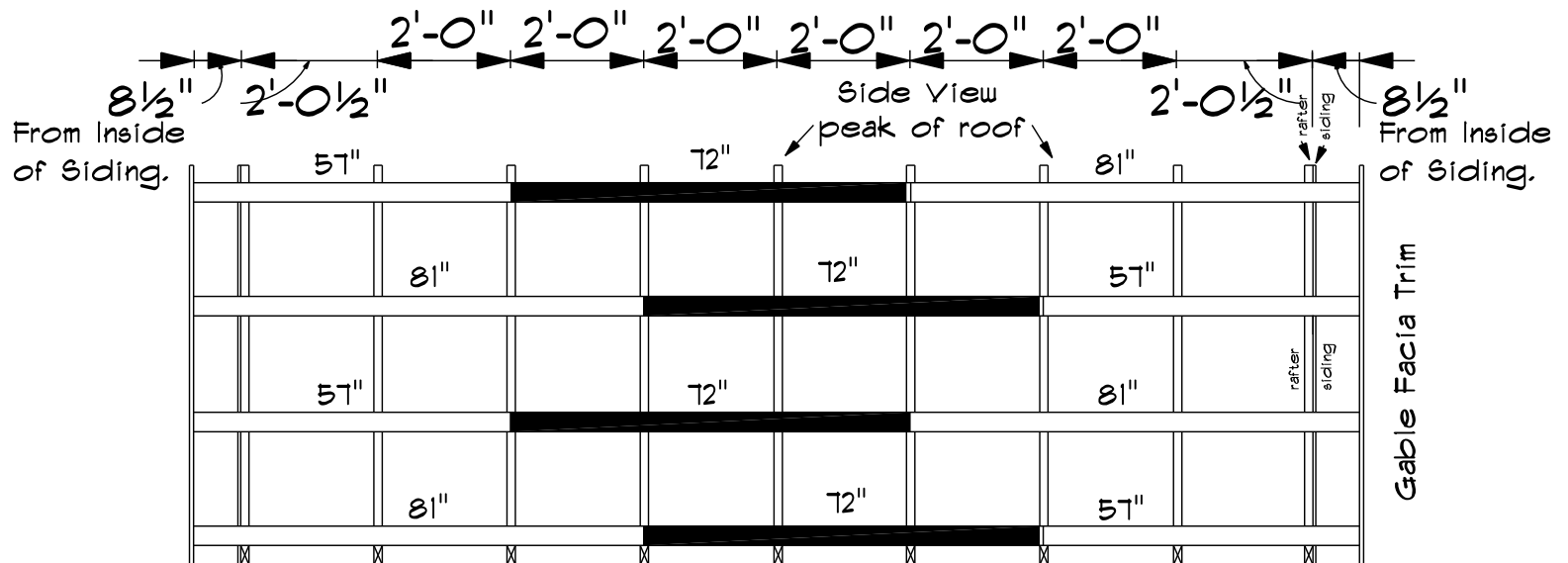


ROOF FRAMING FOR 10X14'.

Extend 2x4" Purlins 8.5" from inside of Gable/End siding for roof overhang.

(8" from outside of Gable/End siding.)

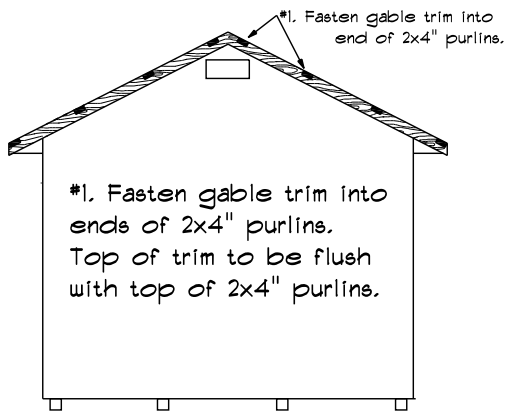
Fasten Gable Facia Trim to outside ends of Purlins.



ROOF FRAMING FOR 10X16'

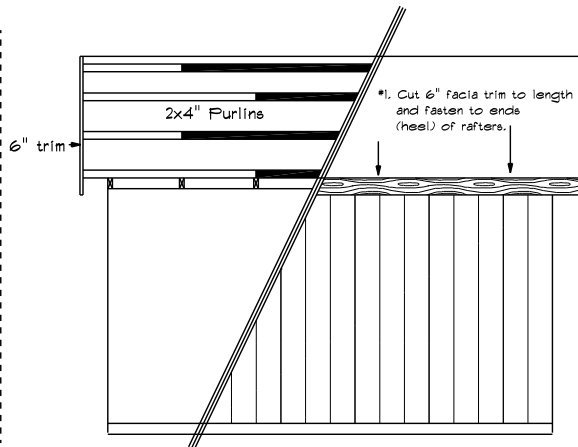
Extend 2x4" Purlins 8.5" from inside of Gable/End siding for roof overhang. (8" from outside of Gable/End siding.)
 Fasten Gable Facia Trim to outside ends of Purlins.

Roof Trim 1

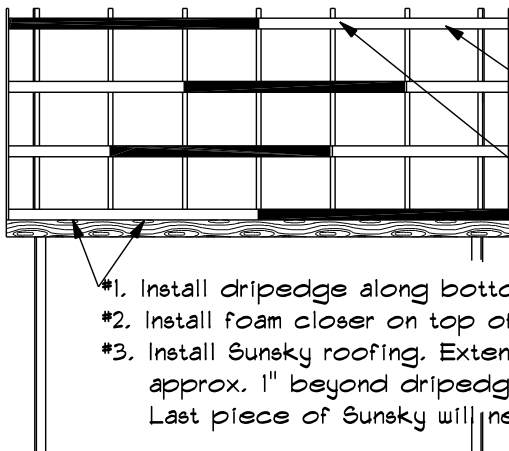


Roof Trim 2

Page 10.

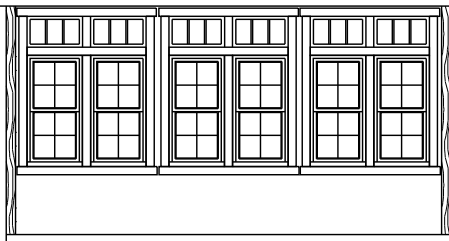


Sunsky Roof Installation. Please also refer to additional roofing photos included in this instructional packet.



- #4. After steps 1-3 have been completed on both sides, install 4 pieces of Rake trim. These will need to be cut to length.
 #5. Install foam closers along top edge of Sunsky, along bottom edge of where the ridgecap will be installed. Use the ridgecap to determine the proper location for the foam closers.
 #6. Install ridgecap. Bend down ends of ridgecap (approx. 1") for a cleaner finish.

- #1. Install corner trim
 #2. Install window trim.
 #3. Install door hardware.



GREENHOUSE SHELVING: Shelving can be framed and installed at your desired location within the greenhouse.

ON THE INSIDE:

Fasten the wall/panel bottom plates to the floor joists. (nailing down thru the ProStruct flooring.)
 Fasten the wall corner-studs together.
 Cut out the 2x4" in the bottom of the door opening. (these aren't needed.)

PAINTING YOUR STRUCTURE:

Your LP Smartside siding comes factory primed, however we recommend using a Latex Exterior grade paint to paint the structure within the first 3 months after construction.