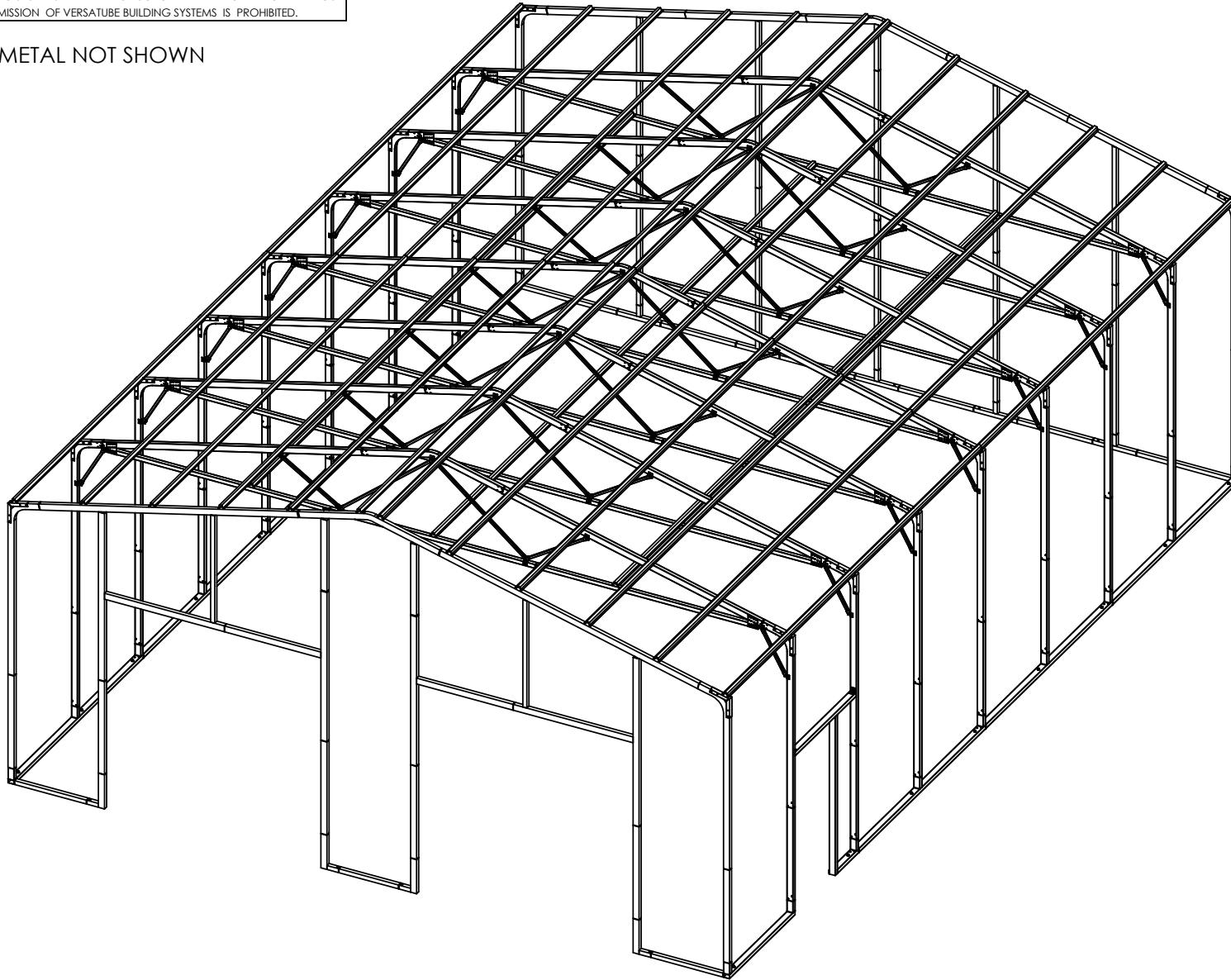


1 2 3 4 5 6 7 8

THE INFORMATION CONTAINED IN THIS DRAWING IS THE SOLE PROPERTY OF VERSATUBE BUILDING SYSTEMS. ANY REPRODUCTION IN PART OR WHOLE WITHOUT THE WRITTEN PERMISSION OF VERSATUBE BUILDING SYSTEMS IS PROHIBITED.

A

SHEET METAL NOT SHOWN



B

C

D

NOTE TO BUILDING DEPARTMENT OFFICIAL:
THESE DRAWINGS AND/OR CALCULATIONS ARE
VALID ONLY FOR STRUCTURES MANUFACTURED
BY VERSATUBE BUILDING SYSTEMS. VERIFICATION
IS RECOMMENDED PRIOR TO BUILDING
APPROVAL.

© Versatube 2016



PROJECT: VERSATUBE FRONTIER BUILDING

TITLE: 30' X 40'-2" X 12' FRONTIER, (2) 9' X 9' GARAGE DOORS,
WALK DOORS, WEB TRUSS BRACE

DWG NO: FB33040120529x9

DRAWN BY: N. ALDERMAN

DATE: 10/30/2020

1 2 3 4 5 6 7 8

THE INFORMATION CONTAINED IN THIS DRAWING IS THE SOLE PROPERTY OF VERSATUBE BUILDING SYSTEMS. ANY REPRODUCTION IN PART OR WHOLE WITHOUT THE WRITTEN PERMISSION OF VERSATUBE BUILDING SYSTEMS IS PROHIBITED.

MATERIALS:

BASE RAILS, HEIGHT EXTENSIONS:
2" X 3" 15 GA 1018 STEEL, 60 KSI, ASTM A500-B

SIDE POSTS, RAFTERS, PEAKS, DOOR HEADERS, DOOR JAMBS:
2" X 3" 14 GA 1018 STEEL, 60 KSI, ASTM A500-B

END WALL VERTICALS & BASE RAILS:
2" SQ 15 GA 1010 STEEL, 50 KSI, ASTM A500-A

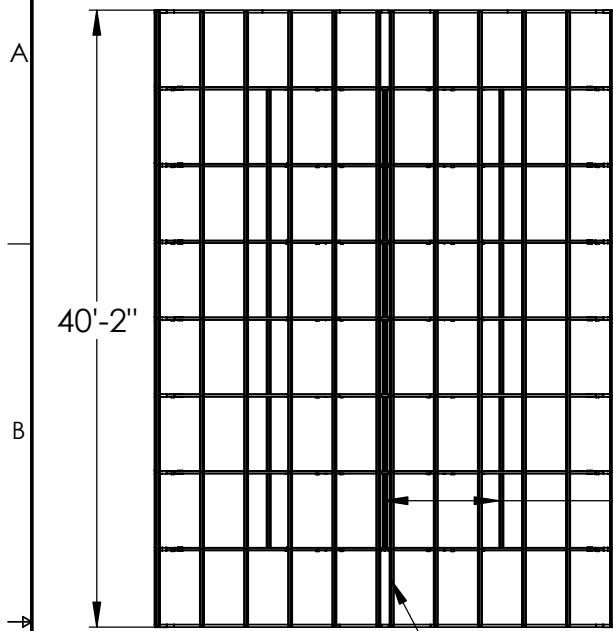
TRUSS BRACE:
2" X 2" 15 GA, 1010 STEEL, 50 KSI, ASTM A500-A

WEB BRACES:
1" SQ 16 GA 1010 STEEL, 50 KSI, ASTM A500-A

HAT CHANNEL:
18 GA, 1010 STEEL, 50 KSI, ASTM A500-A

BRACKETS:
COLLAR TIE, END WALL VERTICAL: 14GA, 50 KSI STEEL, ASTM A500-A
BK-10, BK-20, BK-60, BK-61, BK-65: 12GA, 50 KSI STEEL, ASTM A500-A

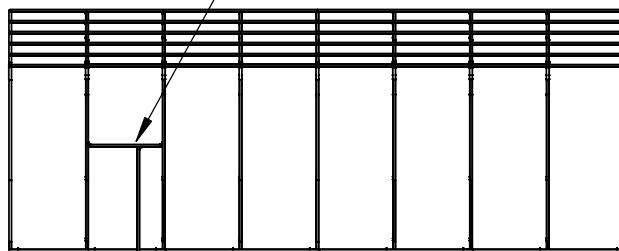
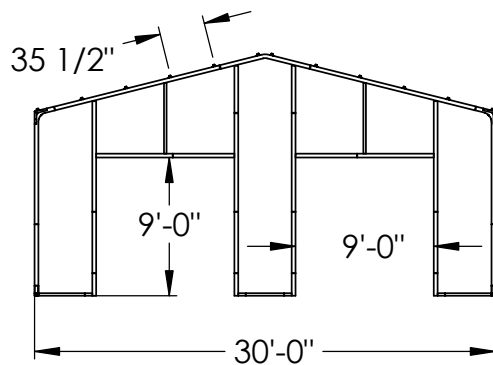
SHEET METAL NOT SHOWN
NOT ALL PURLINS OR GIRTS SHOWN



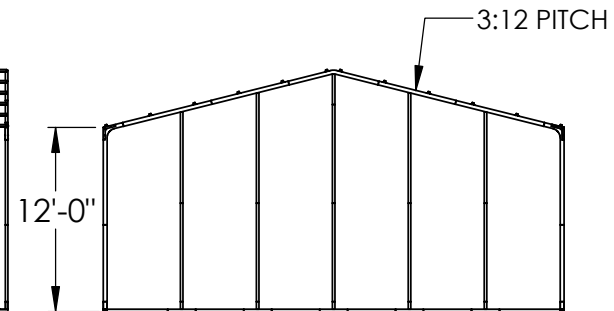
7'-6 7/8"

HAT CHANNEL ALSO ALONG TOP OF INTERIOR TRUSS BRACING

WALK DOOR CAN BE PLACED IN ANY BAY



FE03012110X8-OS30_46255



BE03012

NOTE TO BUILDING DEPARTMENT OFFICIAL:
THESE DRAWINGS AND/OR CALCULATIONS ARE VALID ONLY FOR STRUCTURES MANUFACTURED BY VERSATUBE BUILDING SYSTEMS. VERIFICATION IS RECOMMENDED PRIOR TO BUILDING APPROVAL.

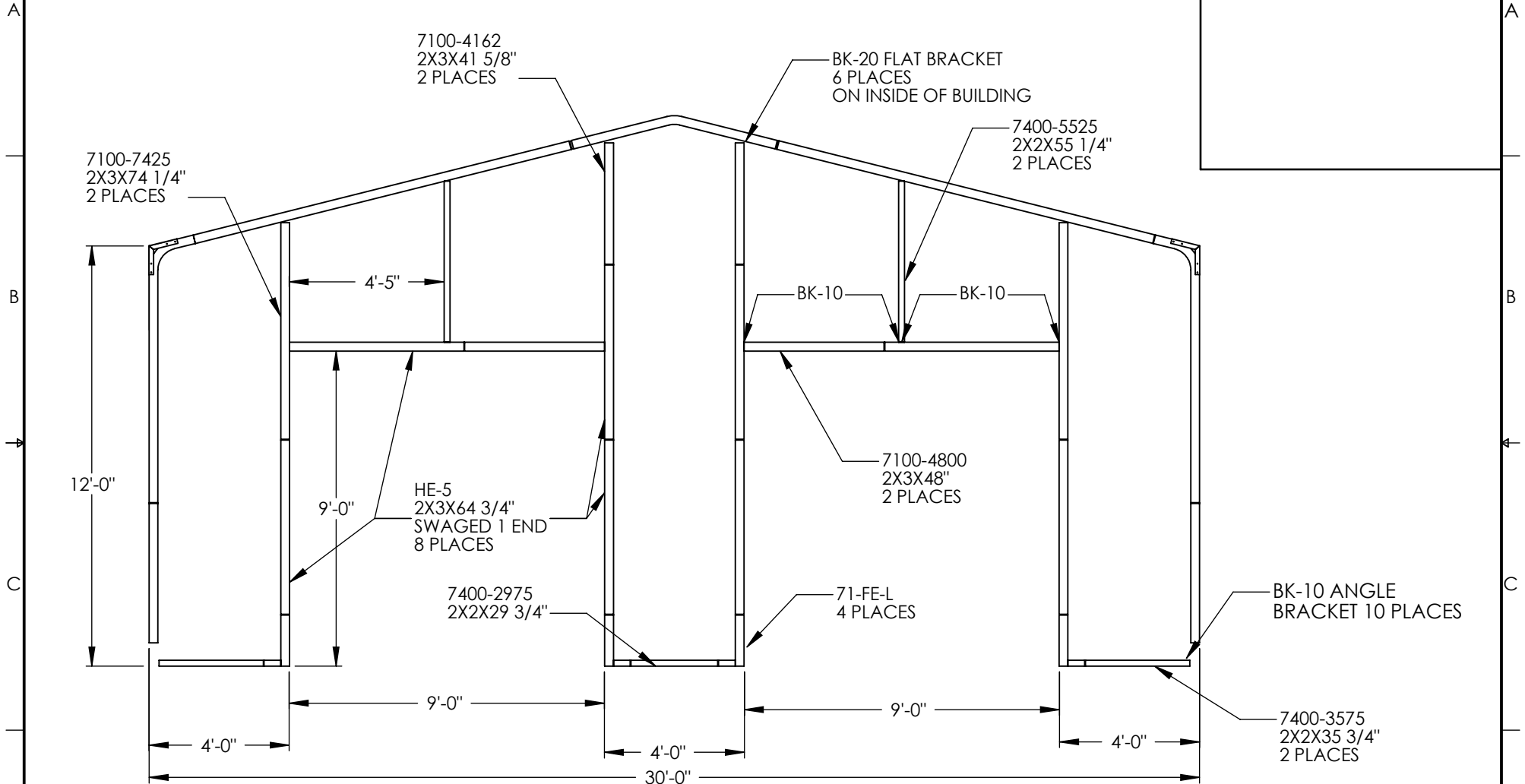
© Versatube 2016



PROJECT:	VERSATUBE FRONTIER BUILDING
TITLE:	30' X 40'-2" X 12' FRONTIER, WEB TRUSS BRACE (2) 9' X 9' GARAGE DOOR, WALK DOOR
DWG NO:	FB33040120529x9 p2
DRAWN BY:	OFFICE
DATE:	10/30/2020

THE INFORMATION CONTAINED IN THIS DRAWING IS THE SOLE PROPERTY OF VERSATUBE BUILDING SYSTEMS. ANY REPRODUCTION IN PART OR WHOLE WITHOUT THE WRITTEN PERMISSION OF VERSATUBE BUILDING SYSTEMS IS PROHIBITED.

(2) 71-9999, 70PC BAG OF SCREWS
 (4) ANC-7, CONCRETE WEDGE ANCHORS



NOTE TO BUILDING DEPARTMENT OFFICIAL:
 THESE DRAWINGS AND/OR CALCULATIONS ARE
 VALID ONLY FOR STRUCTURES MANUFACTURED
 BY VERSATUBE BUILDING SYSTEMS. VERIFICATION
 IS RECOMMENDED PRIOR TO BUILDING
 APPROVAL.

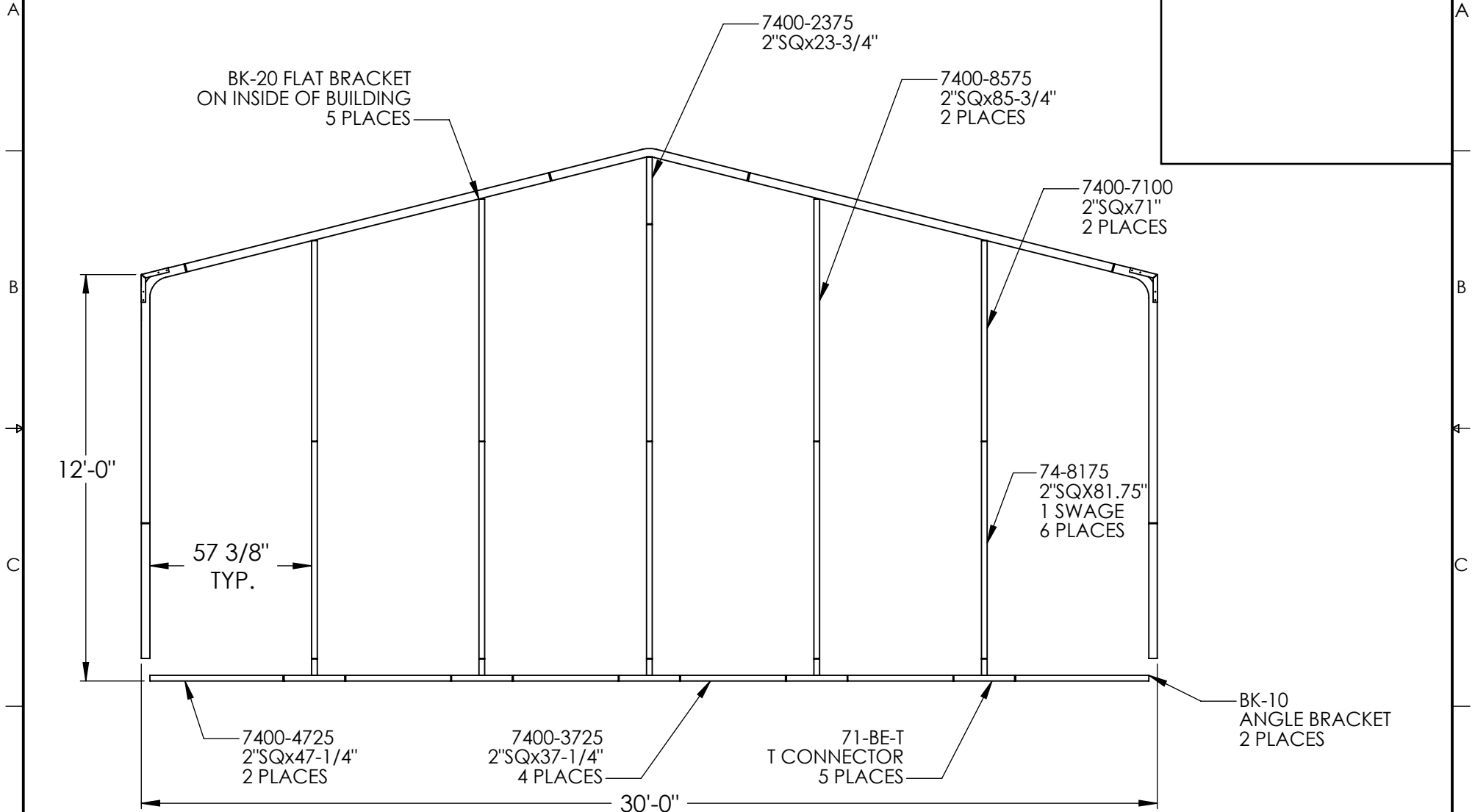
© VERSATUBE BUILDING SYSTEMS 2019



PROJECT:	VERSATUBE END ENCLOSURE
TITLE:	
DWG NO:	FE0301229X9 ECOM 1-8-19
DRAWN BY:	OFFICE
DATE:	1/8/2019

THE INFORMATION CONTAINED IN THIS DRAWING IS THE SOLE PROPERTY OF VERSATUBE BUILDING SYSTEMS. ANY REPRODUCTION IN PART OR WHOLE WITHOUT THE WRITTEN PERMISSION OF VERSATUBE BUILDING SYSTEMS IS PROHIBITED.

(2) 71-9999, 70PC BAG OF SCREWS
(5) ANC-7



NOTE TO BUILDING DEPARTMENT OFFICIAL:
THESE DRAWINGS AND/OR CALCULATIONS ARE VALID ONLY FOR STRUCTURES MANUFACTURED BY VERSATUBE BUILDING SYSTEMS. VERIFICATION IS RECOMMENDED PRIOR TO BUILDING APPROVAL.

© VERSATUBE BUILDING SYSTEMS 2019



PROJECT: VERSATUBE END ENCLOSURE

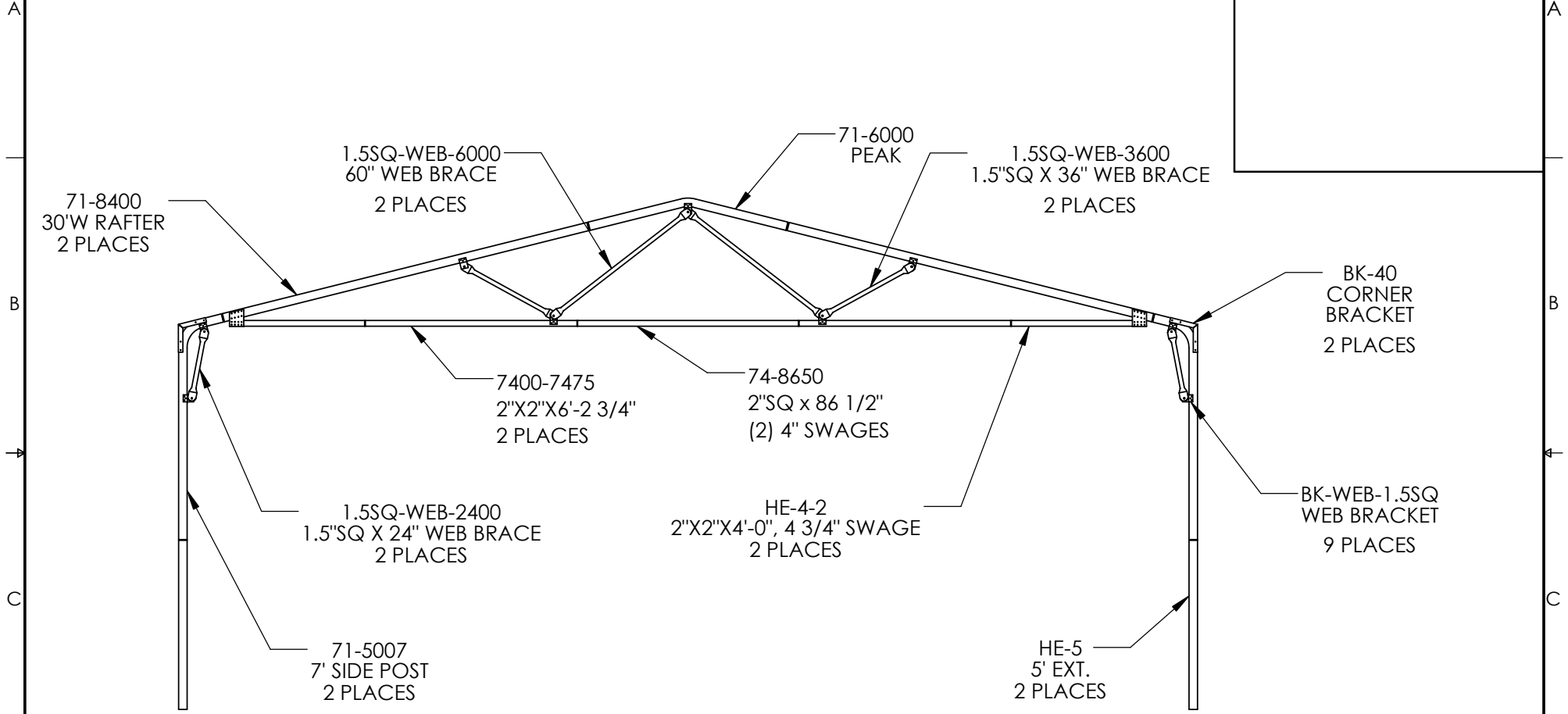
TITLE:

DWG NO: BE03012-5V ECOM 1-8-19

DRAWN BY: OFFICE

DATE: 1/8/2019

THE INFORMATION CONTAINED IN THIS DRAWING IS THE SOLE PROPERTY OF VERSATUBE BUILDING SYSTEMS. ANY REPRODUCTION IN PART OR WHOLE WITHOUT THE WRITTEN PERMISSION OF VERSATUBE BUILDING SYSTEMS IS PROHIBITED.



NOTE TO BUILDING DEPARTMENT OFFICIAL:
THESE DRAWINGS AND/OR CALCULATIONS ARE
VALID ONLY FOR STRUCTURES MANUFACTURED
BY VERSATUBE BUILDING SYSTEMS. VERIFICATION
IS RECOMMENDED PRIOR TO BUILDING
APPROVAL.

© VERSATUBE BUILDING SYSTEMS 2019



PROJECT: VERSATUBE FRAME

TITLE:

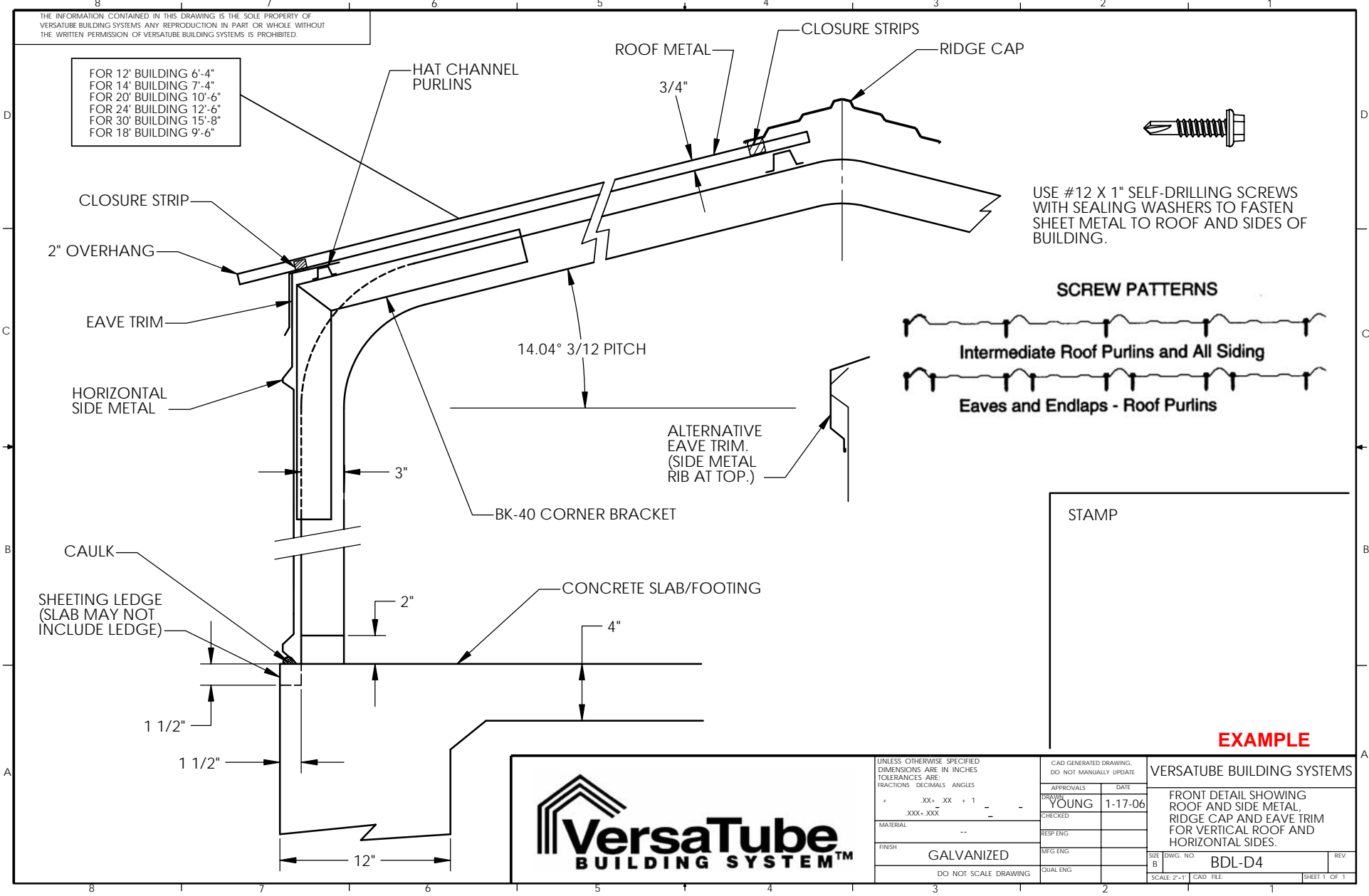
DWG NO: 30X12 RWS TB3 BK40 7&5

DRAWN BY: OFFICE

DATE: 10/29/2020

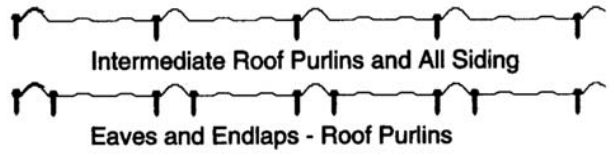
THE INFORMATION CONTAINED IN THIS DRAWING IS THE SOLE PROPERTY OF VERSATUBE BUILDING SYSTEMS. ANY REPRODUCTION IN PART OR WHOLE WITHOUT THE WRITTEN PERMISSION OF VERSATUBE BUILDING SYSTEMS IS PROHIBITED.

FOR 12' BUILDING 6'-4"
 FOR 14' BUILDING 7'-4"
 FOR 20' BUILDING 10'-6"
 FOR 24' BUILDING 12'-6"
 FOR 30' BUILDING 15'-8"
 FOR 18' BUILDING 9'-6"



USE #12 X 1" SELF-DRILLING SCREWS WITH SEALING WASHERS TO FASTEN SHEET METAL TO ROOF AND SIDES OF BUILDING.

SCREW PATTERNS



STAMP

EXAMPLE



UNLESS OTHERWISE SPECIFIED
 DIMENSIONS ARE IN INCHES
 TOLERANCES ARE:
 FRACTIONS DECIMALS ANGLES
 + .XX+ .XX + 1 - -
 .XXX+.XXX
 MATERIAL --
 FINISH GALVANIZED
 DO NOT SCALE DRAWING

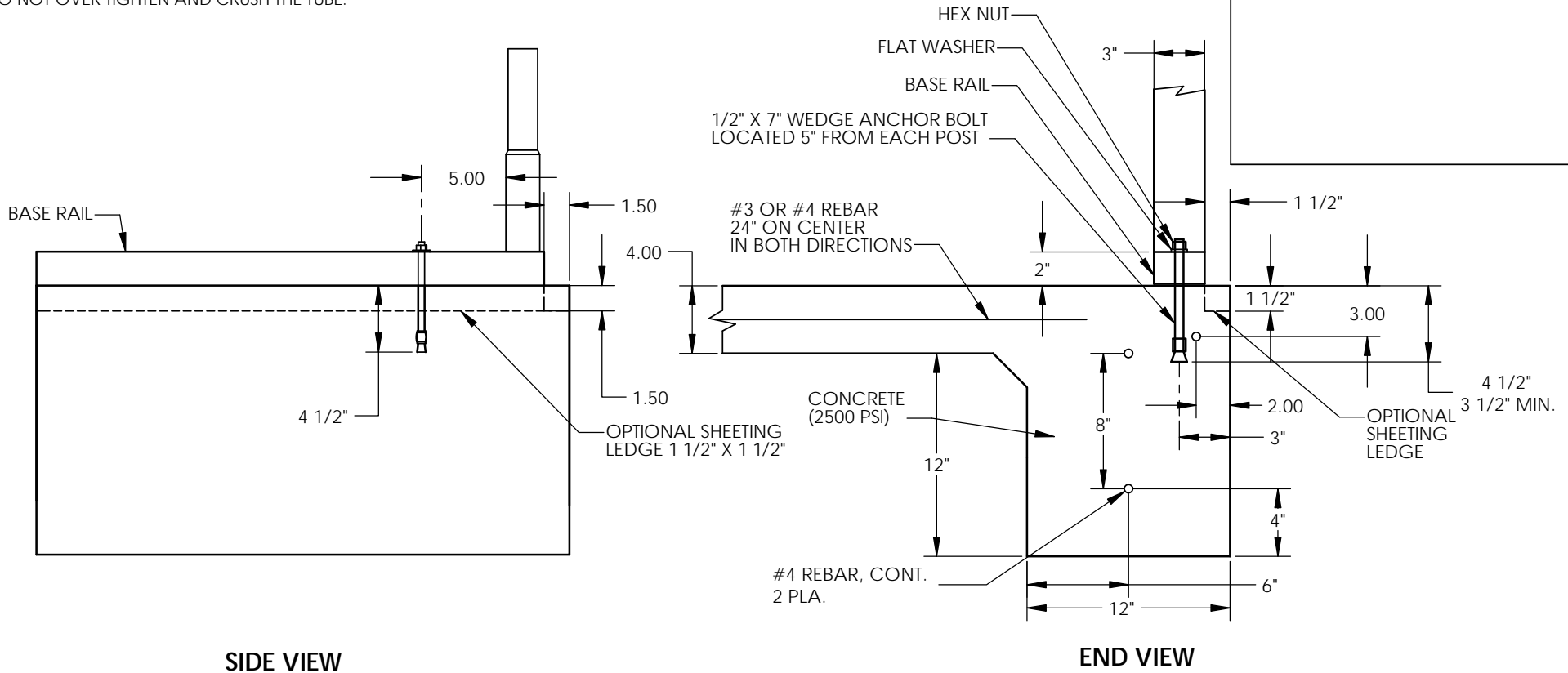
CAD GENERATED DRAWING. DO NOT MANUALLY UPDATE	
APPROVALS	DATE
DRAWN YOUNG	1-17-06
CHECKED	
RESP ENG	
MFG ENG	
QUAL ENG	

VERSATUBE BUILDING SYSTEMS	
FRONT DETAIL SHOWING ROOF AND SIDE METAL, RIDGE CAP AND EAVE TRIM FOR VERTICAL ROOF AND HORIZONTAL SIDES.	
SIZE B	DWG. NO. BDL-D4
SCALE: 2'-1"	CAD. FILE: SHEET 1 OF 1

THE INFORMATION CONTAINED IN THIS DRAWING IS THE SOLE PROPERTY OF VERSATUBE BUILDING SYSTEMS. ANY REPRODUCTION IN PART OR WHOLE WITHOUT THE WRITTEN PERMISSION OF VERSATUBE BUILDING SYSTEMS IS PROHIBITED.

WEDGE ANCHOR DETAIL

INSTALLATION: USING HAMMER DRILL AND A 1/2" CONCRETE DRILL BIT, DRILL A HOLE INTO THE CONCRETE 5" TO 5 1/2" DEEP. PLACE THE FLAT WASHER ON THE BOLT AND INSTALL THE NUT UNTIL ABOUT 2 THREADS ARE EXPOSED ABOVE THE NUT. TAP THE ANCHOR THROUGH THE BASE RAIL INTO THE HOLE UNTIL THE WASHER TOUCHES THE TOP OF THE BASE RAIL. NOW, TIGHTEN THE NUT TO SET THE ANCHOR. DO NOT OVER TIGHTEN AND CRUSH THE TUBE.



SIDE VIEW

END VIEW

ANCHOR HOLD DOWN FORCE 2,425 (POWERS FASTENERS, INC.) **ESR-2818**

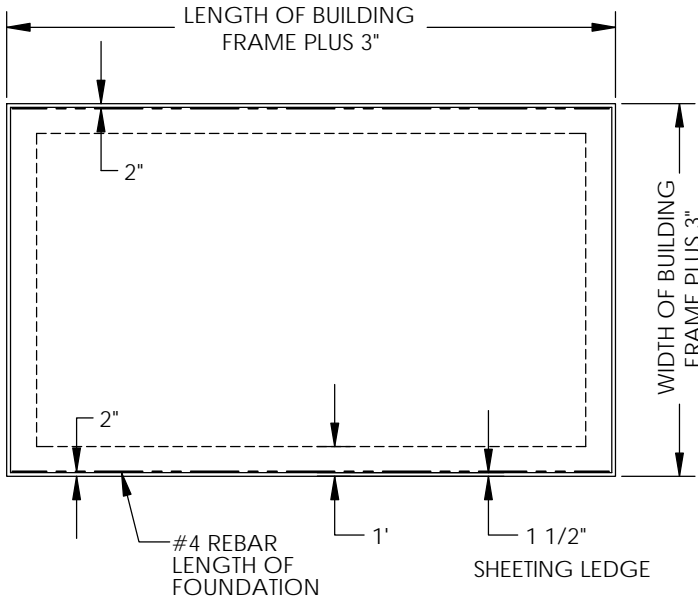


UNLESS OTHERWISE SPECIFIED DIMENSIONS ARE IN INCHES TOLERANCES ARE: FRACTIONS DECIMALS ANGLES		CAD GENERATED DRAWING. DO NOT MANUALLY UPDATE	
APPROVALS		DATE	
DRAWN OLIVER		5/13/15	
CHECKED			
MATERIAL		RESP ENG	
FINISH		MFG ENG	
DO NOT SCALE DRAWING		QUAL ENG	

VERSATUBE BUILDING SYSTEMS			
POWERS WEDGE ANCHOR FOR NO SIDE HAT CHANNEL BUILDINGS DETAIL 1/2" X 7"			
SIZE	DWG. NO.	REV.	
B	WEDGE ANCHOR DETAIL 2 POWERS	NO INSP NOTE WITH REINF REBAR	
SCALE	CAD FILE	SHEET 1 OF 1	

EXAMPLE

THE INFORMATION CONTAINED IN THIS DRAWING IS THE SOLE PROPERTY OF VERSATUBE BUILDING SYSTEMS. ANY REPRODUCTION IN PART OR WHOLE WITHOUT THE WRITTEN PERMISSION OF VERSATUBE BUILDING SYSTEMS IS PROHIBITED.



REQUIRED FOUNDATION/SLAB SIZE FOR HORIZONTALLY SHEETED OR VERTICAL FLUSH MOUNT SHEETED SIZE WALLS

NOTE: ALL VERSATUBE FULLY ENCLOSED GARAGES ARE 2" LONGER THAN ADVERTISED.

DIMENSIONS ARE OUTSIDE TO OUTSIDE OF SLAB. THE SLAB OUT TO OUT DIMENSIONS MUST BE 3" WIDER AND 3" LONGER THAN THE BUILDING SIZE.

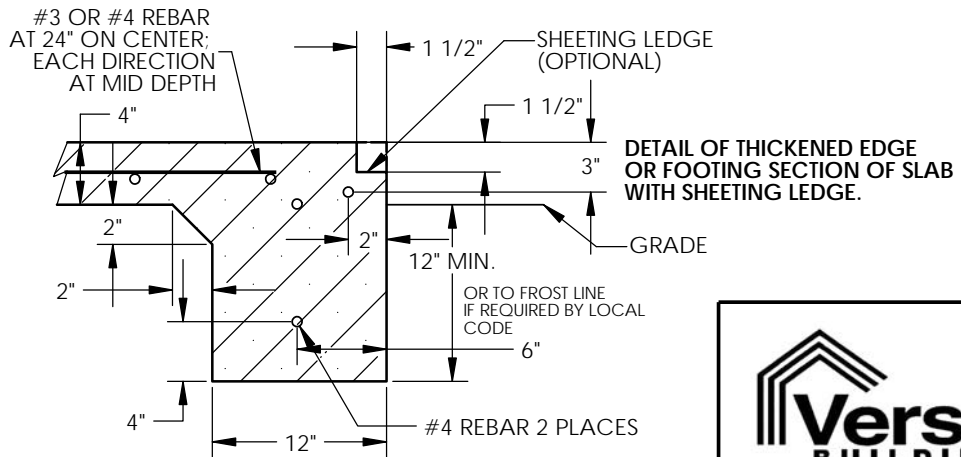
**EXAMPLE:
20'W X 40'-2"L X 10'H BUILDING WOULD HAVE A SLAB DIMENSION OF 20'-3"W X 40'-5"L.**

FOR FURTHER QUESTIONS OR CONCERNS ABOUT BUILDING OR SLAB LENGTH, CONTACT A PRODUCT & DESIGN ENGINEER AT VERSATUBE TOLL FREE AT 1-800-900-7222.

GENERAL FOUNDATION NOTES:

1. MAXIMUM ALLOWABLE SOIL BEARING PRESSURE IS 1500PSF IN ACCORDANCE WITH APPLICABLE CODE. OWNER TO VERIFY THAT SOIL IS STABLE AND COMPACTED TO A MINIMUM OF 95% RELATIVE OPTIMUM VALUE.
2. MAXIMUM SIZE CONCRETE AGGREGATE SHALL BE 1" DIA.
3. MINIMUM COMPRESSIVE STRENGTH OF CONCRETE AT 28 DAYS SHALL BE 2500 PSI.
4. PLACE REINFORCEMENT AT MID DEPTH FOR SLABS ON GRADE.
5. ALL SPLICES IN CONTINUOUS REINFORCEMENT OR REINFORCING SHALL HAVE A MINIMUM LAP OF 40 DIAMETERS. SPLICES IN ADJACENT BARS SHALL NOT BE LESS THAN 4'-0" APART. VERTICAL WALL BARS SHALL BE SPLICED AT OR NEAR FLOOR LINES. BARS MAY BE WIRED TOGETHER AT SPLICES OR LAPS EXCEPT FOR TOP REINF. OF BEAM AND SLABS, OR WHERE SPECIFICALLY DETAILED TO BE SEPARATED.
6. CONCRETE SHALL BE PLACED IN ACCORDANCE WITH THE LATEST ACI SPECIFICATIONS.

THIS IS AN OPTIONAL FOUNDATION DESIGN. OTHER ENGINEERED DESIGNS MAY BE SUBSTITUTED.

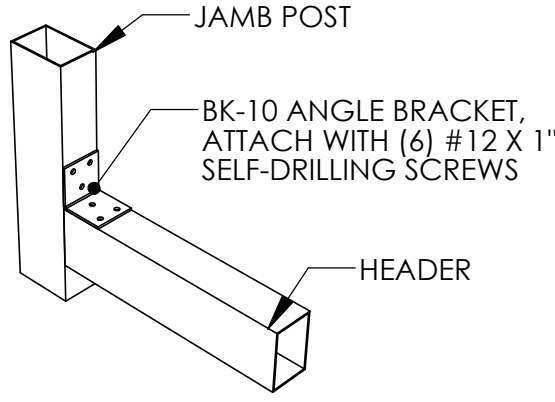


EXAMPLE

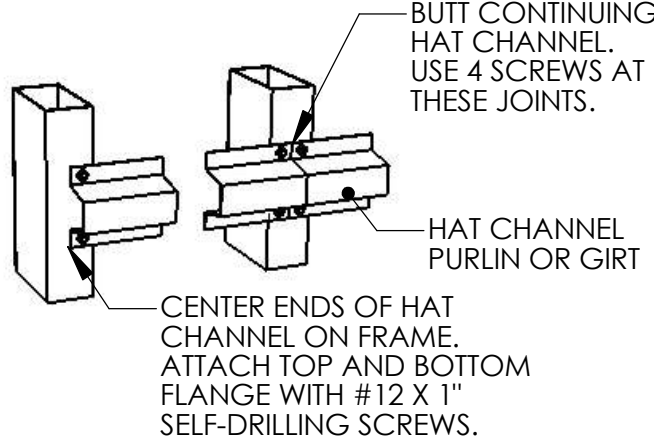


UNLESS OTHERWISE SPECIFIED DIMENSIONS ARE IN INCHES TOLERANCES ARE: FRACTIONS DECIMALS ANGLES + .XX + .XX + 1 - - .XXX + .XXX - -	CAD GENERATED DRAWING. DO NOT MANUALLY UPDATE		VERSATUBE BUILDING SYSTEMS	
	APPROVALS	DATE	MONOSLAB FOUNDATION FOR BUILDINGS WITH HORIZONTAL SIDE SHEET METAL REBAR REINFORCEMENT LENGTH OF FOUNDATION	
	DRAWN BARTGES	3/30/15		
	MATERIAL 2,500 PSI CONCRETE	CHECKED	RESP ENG	SIZE B
FINISH	DO NOT SCALE DRAWING	MFG ENG	SCALE	REV. REBAR REINF SWARBRICK
		QUAL ENG	CAD FILE	SHEET 1 OF 1

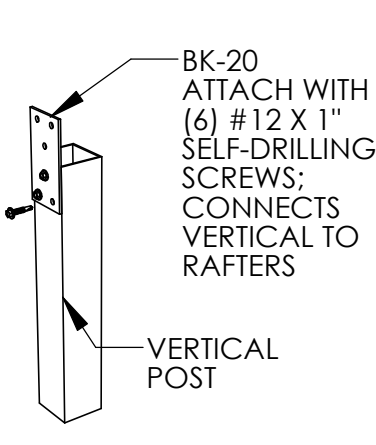
THE INFORMATION CONTAINED IN THIS DRAWING IS THE SOLE PROPERTY OF VERSATUBE BUILDING SYSTEMS ANY REPRODUCTION IN PART OR WHOLE WITHOUT THE WRITTEN PERMISSION OF VERSATUBE BUILDING SYSTEMS IS PROHIBITED.



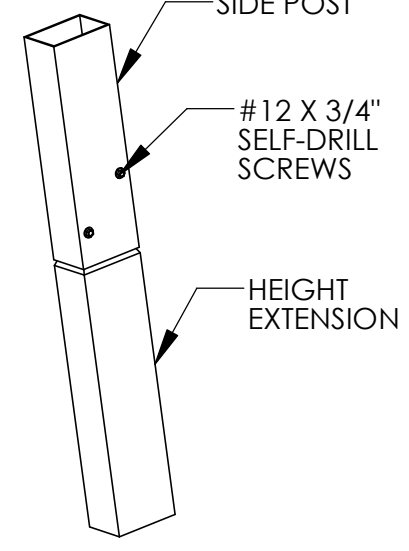
BK-10 ANGLE BRACKET, END WALL HEADER TO VERTICAL



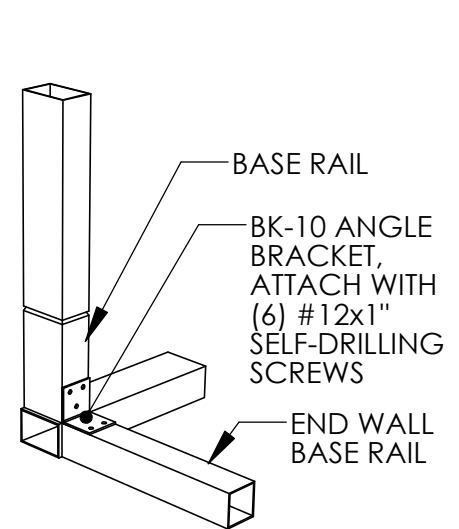
HAT CHANNEL PURLIN OR GIRT TO FRAME 1 1/2" HIGH, 18GA



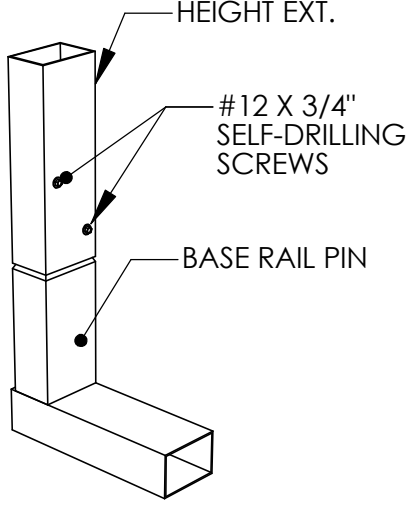
BK-20 FLAT BRACKET, VERTICAL POST TO RAFTER



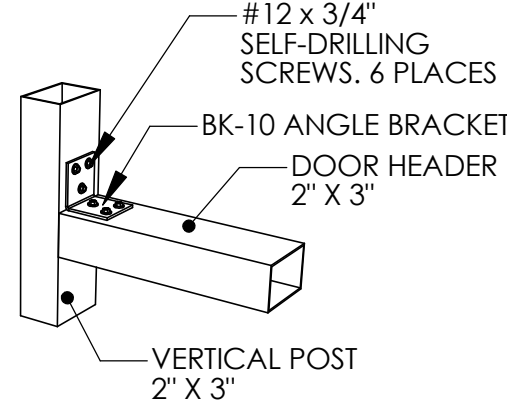
HEIGHT EXTENSION TO SIDE POST DETAIL



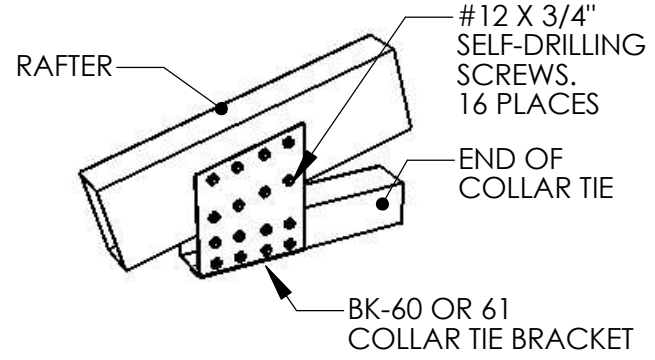
BK-10 ANGLE BRACKET, END WALL RAIL TO SIDE POST AND BASE RAIL



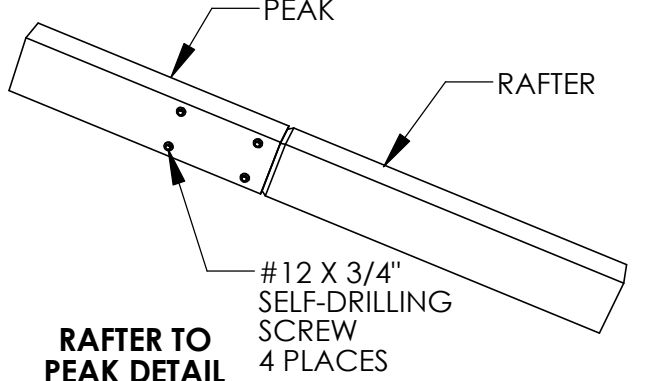
BASE RAIL TO HEIGHT EXTENSION DETAIL



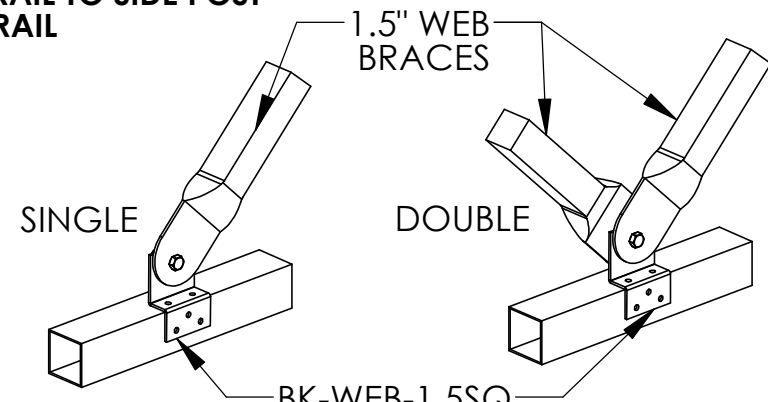
WALK DOOR HEADER TUBE OR WINDOW PANE TO VERTICAL POST ON FRONT OR BACK OF BUILDING.



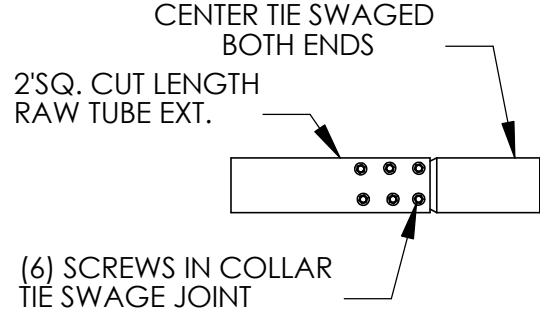
COLLAR TIE CONNECTION DETAIL



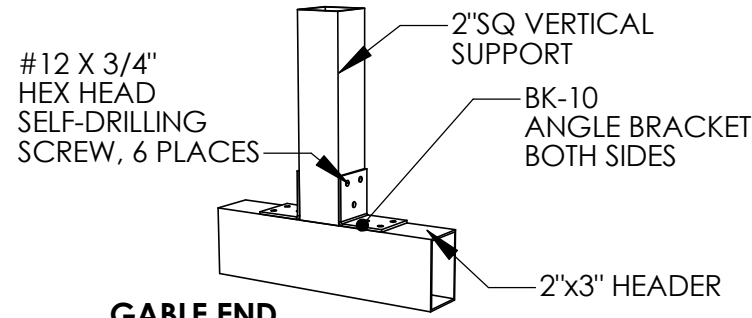
RAFTER TO PEAK DETAIL



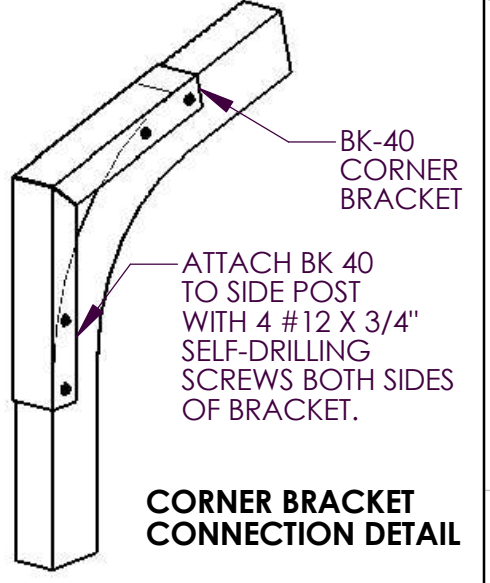
WEB BRACE DETAIL



COLLAR TIE BRACKET DETAIL



GABLE END DOOR HEADER DETAIL



CORNER BRACKET CONNECTION DETAIL

ATTACH BRACE BRACKET TO RAFTER, PEAK, EAVE CORNER OR COLLAR TIE WITH SELF-DRILLING SCREWS. FASTEN THE FLATTENED AND PIERCED END OF BRACES TO BRACKET WITH 3/8" X 1 1/4" HEX BOLT, 3/8" SPLIT LOCK WASHER AND HEX NUT.

NOTE: DO NOT TIGHTEN BOLT JOINT UNTIL BRACKETS ARE ALL IN PLACE.



PROJECT: VERSATUBE DETAIL PAGE	
TITLE: CONNECTION DETAILS	
DWG NO: ASSEMBLY DETAILS 2X3 FRONTIER TBW BK1.5	
DRAWN BY: R. HUTCHINS	DATE: 10/24/17