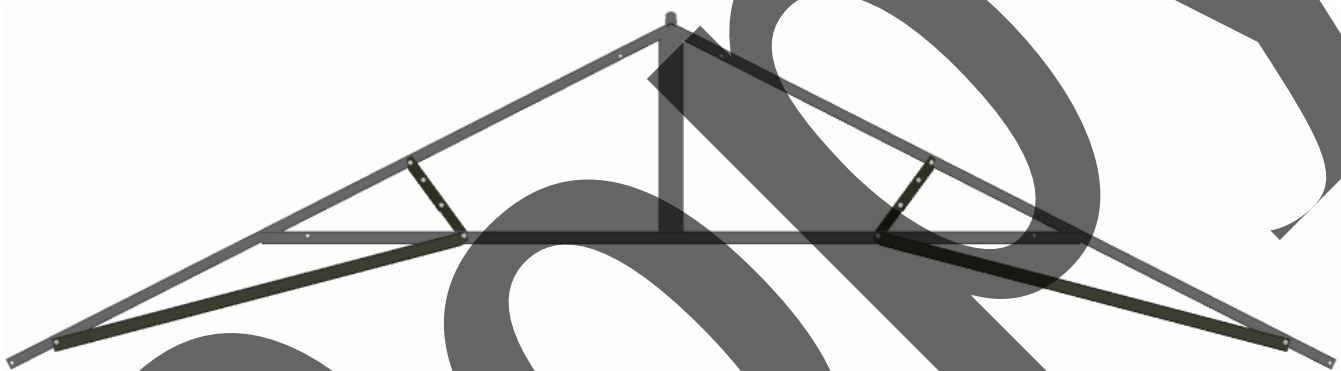




9/12/2008

VISIT THE LIFETIME WEB SITE:  
[WWW.LIFETIME.COM](http://WWW.LIFETIME.COM)

## Snow Load Kit For 11' Sheds Kit #1034594



**\*\*U.S. and Canada customers ONLY\*\***

IF ASSISTANCE IS NEEDED,

**DO NOT CONTACT THE STORE!!!**

CALL OUR CUSTOMER SERVICE DEPARTMENT at **1 (800) 225-3865**

HOURS: 7:00 a.m. to 5:00 p.m. Monday through Friday (Mountain Standard Time)

Call, or visit our Website for Saturday hours.

**\*\*For customers outside the U.S. or Canada, please contact the store for assistance.\*\***

STOP!

## Before Beginning Assembly

STOP!

A. Identify and inventory all parts using the checklist boxes on the Parts List. Keep the hardware bags and their contents separate. If any parts are missing, call our Customer Service Department.

### PARTS LIST

ID	Part #	Description	Qty	✓
A	1034590	Truss Bracket A	2	<input type="checkbox"/>
B	1034591	Truss Bracket B	2	<input type="checkbox"/>
C	1046981	Long Truss Support	2	<input type="checkbox"/>
<b>Hardware Bag [1039532]</b>				
HA	300072	1/4"-20 x 1 1/2" Hex Bolt	6	<input type="checkbox"/>
HB	BN00300	1/4"-20 Cap Nut	10	<input type="checkbox"/>
HC	1006750	1/4"-20 x 1 3/4" Hex Bolt	4	<input type="checkbox"/>

### Tools and Materials Required for Assembly (Not Included)

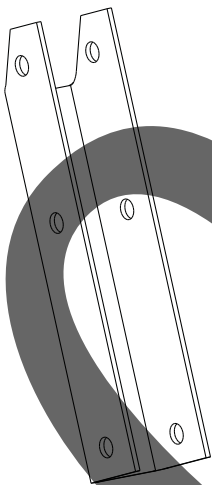
1. Electric Drill
2. 5/16" Drill Bit
3. 7/16" Wrench (x2)

**Note:** One kit contains enough parts to reinforce both sides of one Shed Truss Assembly.

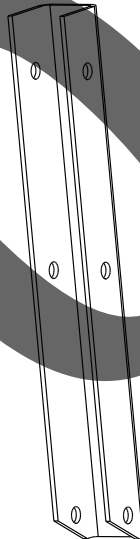
### Kit Parts

(Not actual size)

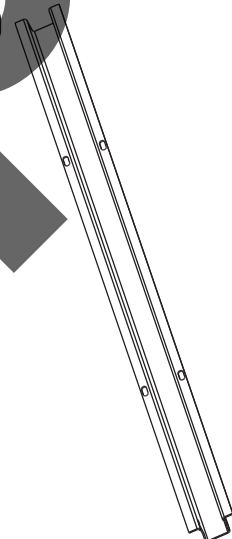
A



B



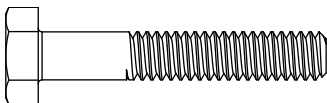
C



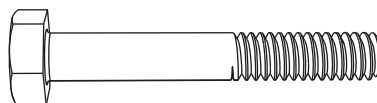
### Kit Hardware

(Actual size)

HA



HC

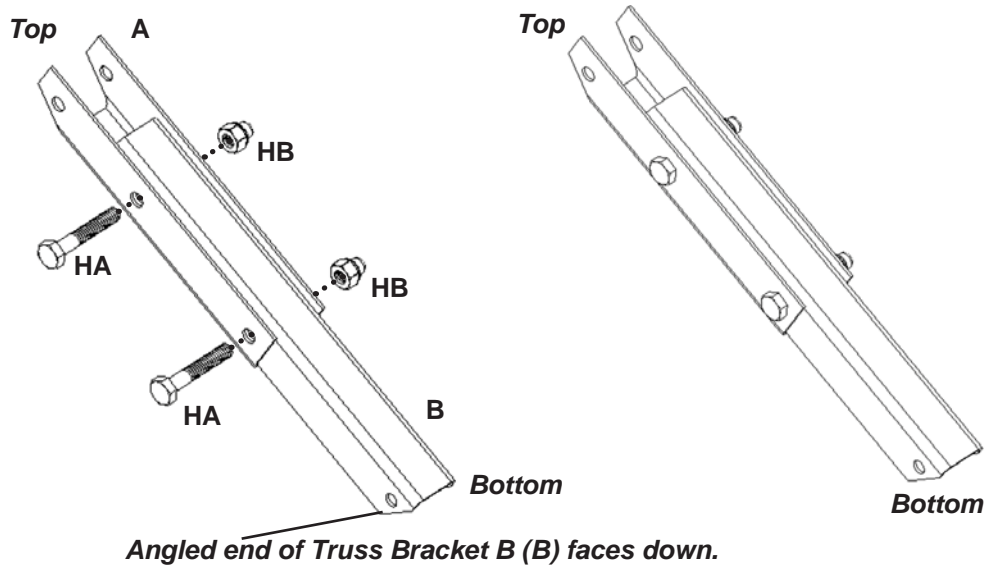


HB

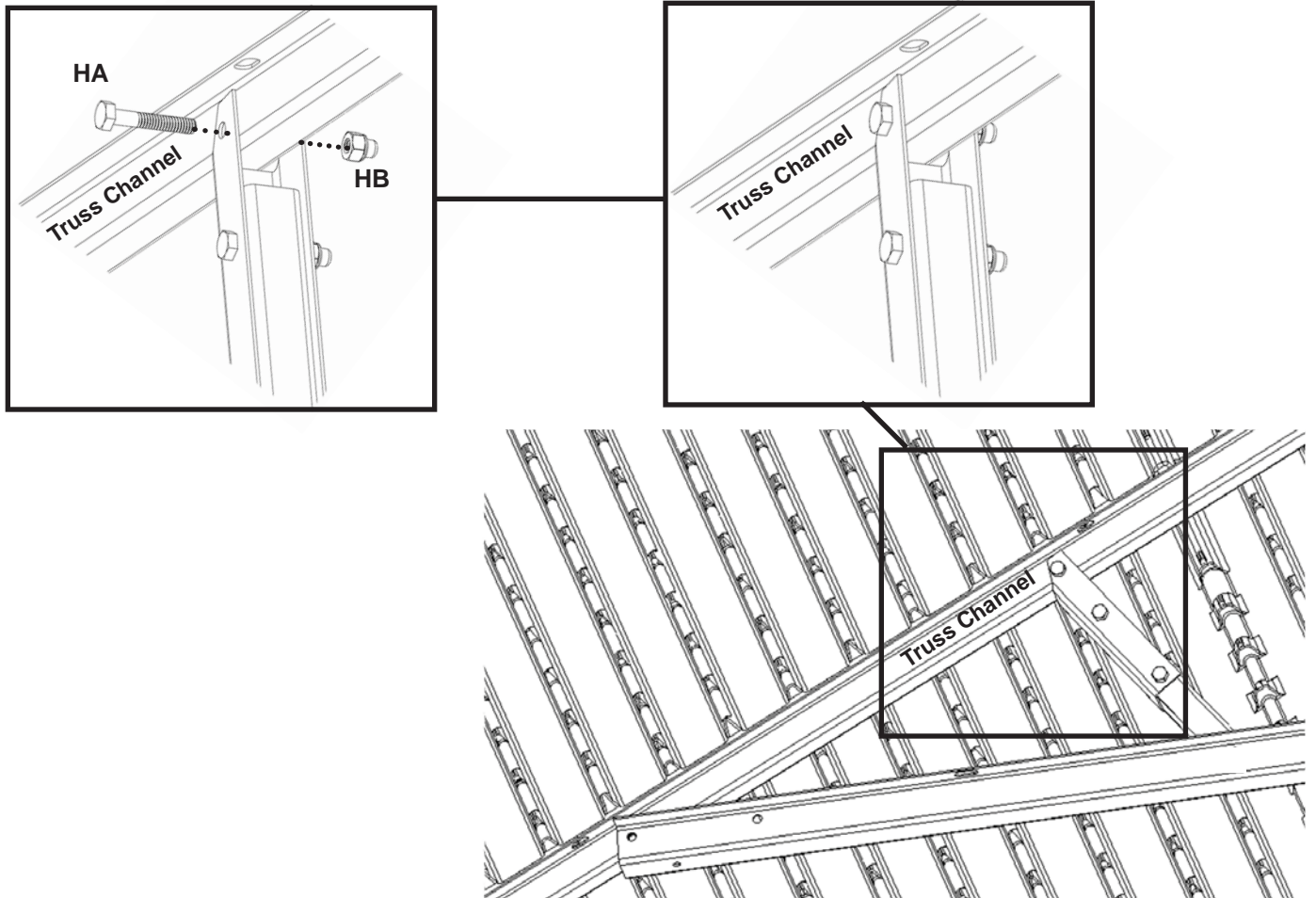


1.1: Slide **Truss Bracket B (B)** into **Truss Bracket A (A)** and align the holes as shown. Secure with two (2) **1/4"-20 x 1 1/2" Hex Bolts (HA)** and two (2) **Cap Nuts (HB)**.

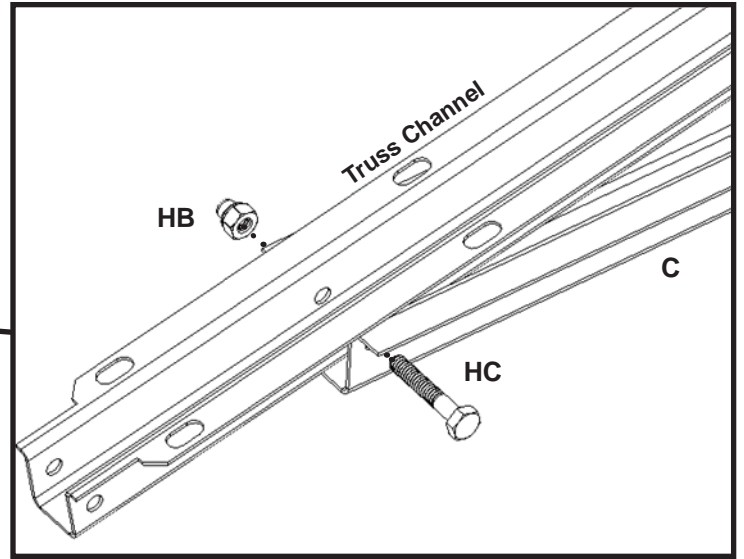
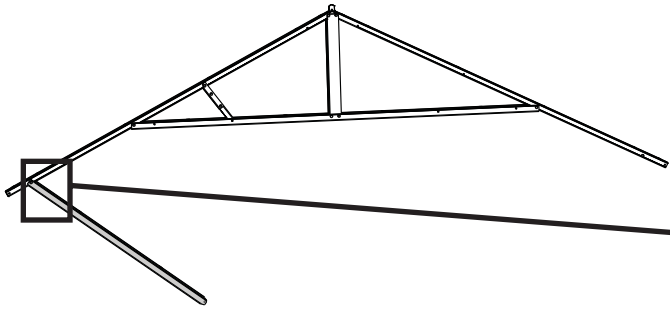
1.2: Repeat **Step 1.1** for each **Truss Bracket Assembly**.



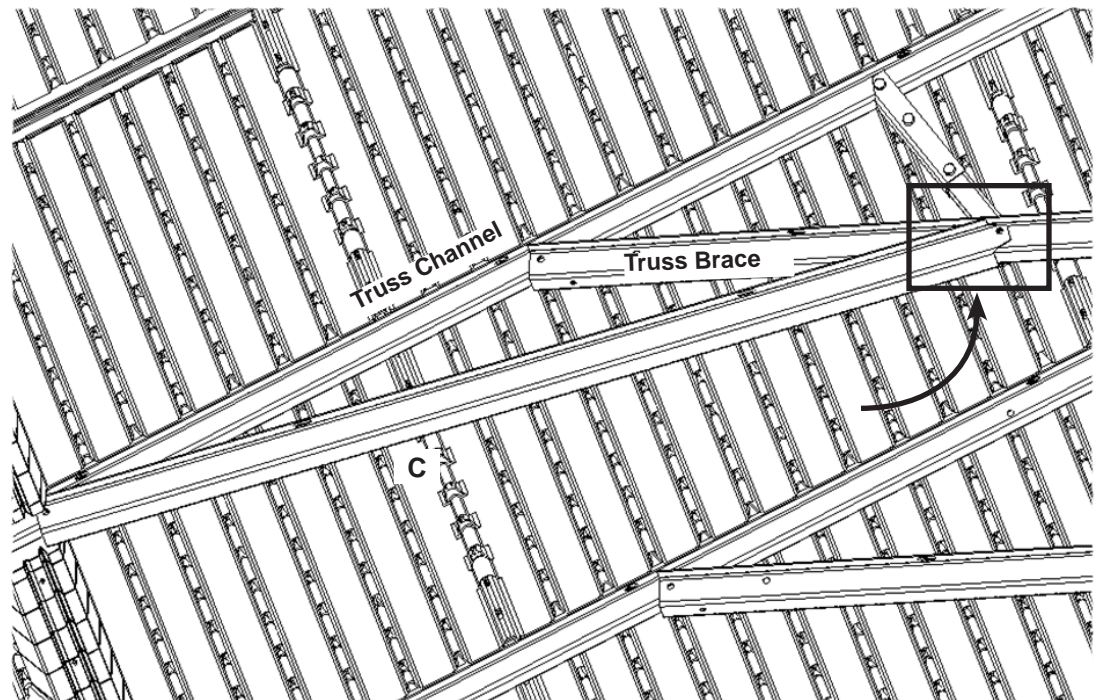
1.3: Loosely attach a **Truss Bracket Assembly** to a **Truss Channel** using one (1) **Hex Bolt (HA)** and one (1) **Cap Nut (HB)** through the hole at the position shown.



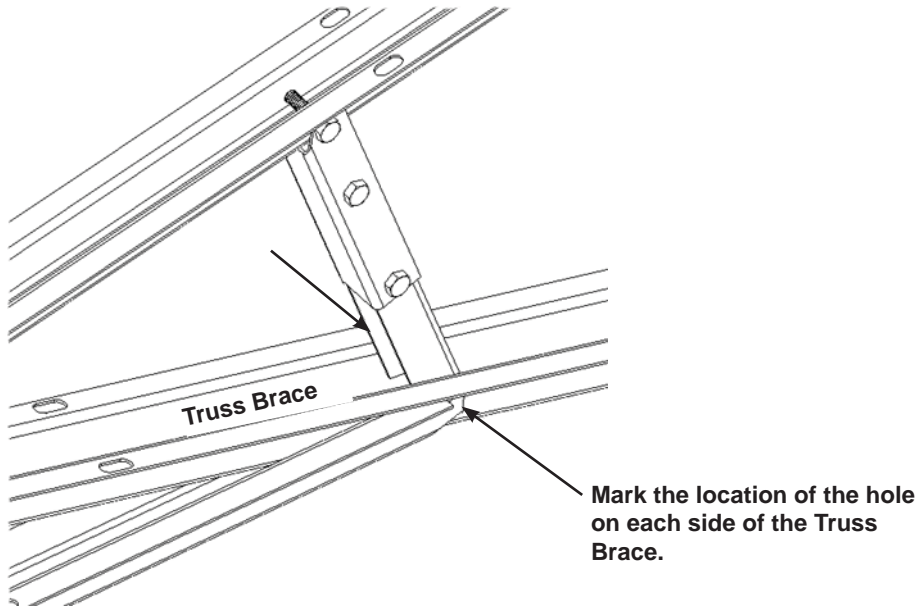
1.4: Loosely attach the **Long Truss Support (C)** to the **Truss Channel** using one (1) **Hex Bolt (HC)** and one (1) **Cap Nut (HB)**.



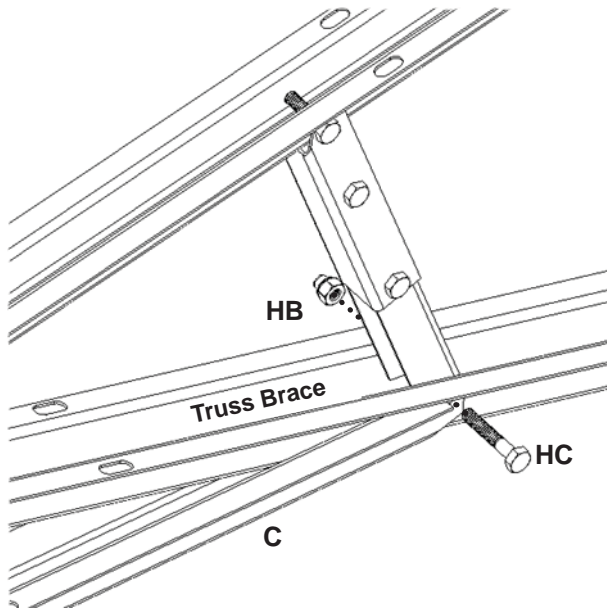
1.5: Rotate the **Long Truss Support (C)** upward until it meets the **Truss Bracket Assembly** and **Truss Brace**.



**1.6:** Mark the location of the hole on each side of the Truss Brace. Drill a hole at each spot, with a 5/16" Drill Bit.



**1.7:** Loosely secure the Long Truss Support (A) and the Truss Bracket Assembly to the Truss Brace.



**1.8:** Repeat **Steps 1.3 to 1.7** for the other side of the Truss.

**1.9:** Tighten all hardware.

**1.10:** Repeat **Steps 1.3 to 1.9** for all Trusses.

